



ROWLEDGE Review

90p

November 2020

**New
Churchwardens
- and thanks to
Lesley & Mike**

Page 23

**Rowledge
Remembers**

Page 34 & 35

Rowledge • Boundstone
Holt Pound • Bucks Horn Oak



Produced for the community by

St.James' Church
Rowledge

The Hare & Hounds



Fresh home-cooked food and a friendly welcome.

Lockdown Take-Aways available

*A touch of Irish charm
at the heart of the village.*



The Square, Rowledge, GU10 4AA

Tel: 01252 792287

MARTIN CASHMORE FENCING LTD

SUPPLIER & CONTRACTOR

Our family run business was established in 1982. We are located just outside Farnham on the A325. We stock a large quantity of Fencing Materials, Oak and Softwood Sleepers, Gates, Wire Fencing, Tools, Fittings and much more.

We offer a prompt delivery service to a wide area.

We supply and install all types of Fencing and Gates, please contact us for a free quote.

01420 521040

jake.mcfsales@btinternet.com



www.martincashmore.co.uk

Unit 2, Halfway Farm, Dockenfield Road,
Bucks Horn Oak, Farnham, GU10 4LP





From the Vicarage

This year, our community's act of remembrance will, by necessity, look somewhat different (see elsewhere in this issue for more details). But it is important that we do not confuse the process by which we remember, with the actual act of remembrance itself. Too often in life, it seems that if we are not very careful, we can get too focused on 'process' and end up overlooking the very meaning of what we set out to do. So this year, whilst we will not be able to hold our traditional Service of Remembrance in the Church (social distancing rules have sadly limited us to only 18 available seats), we will not walk solemnly behind the cross to the War Memorial and we will not be able to gather for the traditional two-minute silence, we can still stop at 11am wherever we are, to remember the sacrifice of so many in the cause of freedom.

Jesus of Nazareth spoke of the importance of remembering, but he was more interested in the need to remember, rather than the method used. In fact, he kept it very simple. This is how Luke's gospel records Jesus' last meal with his friends:

"He took some bread and gave thanks to God for it. Then he broke it in pieces and gave it to the disciples, saying, "This is my body, which is given for you. Do this in remembrance of me." After supper he took another cup of wine and said, "This cup is the new covenant between God and his people - an agreement confirmed with my blood, which is poured out as a sacrifice for you."

(Luke 22: 19-20)

Bread and wine – a reminder that Jesus' body would be broken, and his blood shed as he died on the cross as the ultimate sacrifice to bring freedom from sin for all humanity (be it the punch-up the playground, the riot between racial groups, or the nuclear stand-off between nations).

It is not how we celebrate this simple meal (and the worldwide Church has many and varied ways of doing it), it is the fact that we continue to do it, that we continue to remember Jesus' sacrifice, that is important.



As we bow our heads at 11am on Remembrance Sunday, we are remembering that men and women have laid down their lives, and continue to do so, so that we can live in peace. As Christians kneel to take the bread and wine of Holy Communion, they too are remembering a life laid down in the cause of peace. God the Son's death on the cross was

primarily a way of bringing reconciliation and healing between God and humanity, but it was also the ultimate expression of the depth of the Father's love for his children.

As we remember again the sacrifice of so many, as we file past our community's War Memorial, perhaps we might ponder anew, its design – a cross, calling us to remember again, God's love for all humanity – including you and me.

Blessings



Rev. Russ Gant, Vicar

PARISH REGISTER

23rd October – Molly Puddephatt



BIBLE READING NOTES

As a church, St James' offer the opportunity to have daily bible readings with notes in book form, which is published three times a year, or by daily email. The full cost would be £17.95 but, by annual subscription through the church, this is reduced to £14.10.

Try before you buy!

I have some past copies of New Daylight (Bible Reading Fellowship) and would be pleased to give them to anyone who might be interested. Please call **Sue Kelly** on **01252 795433** or Email on **suekelly@madasafish.com**



IN OUR PRAYERS

If you have any specific prayer requests you are invited to email **prayer@stjamesrowledge.org.uk** (or contact Russ by phone) who will ensure the church prays for your situation.



Morning Prayers

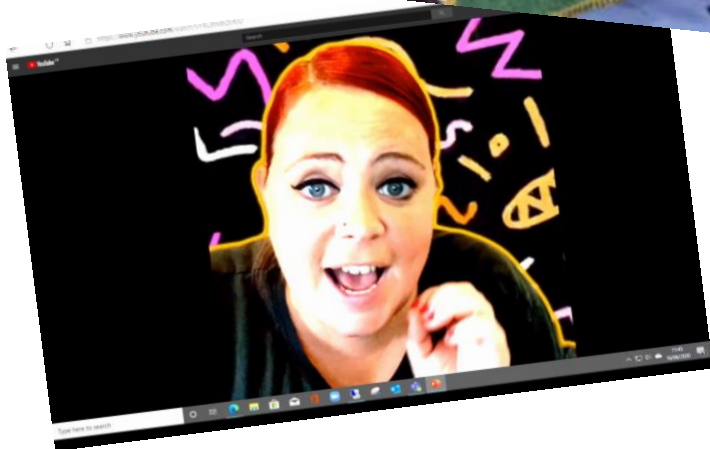
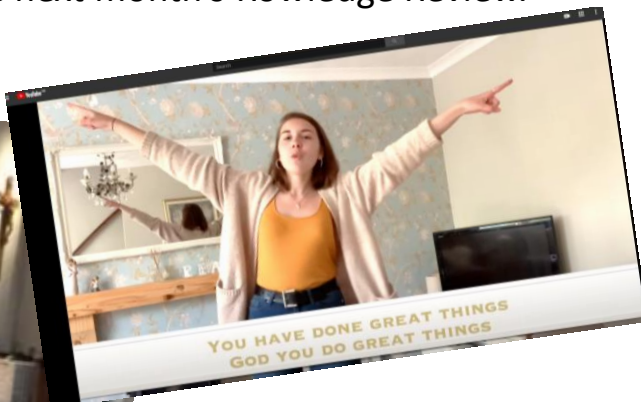
Morning Prayer is every Wednesday at 9:15am. We will continue to meet virtually for approximately half an hour. Email **vicar@stjamesrowledge.org.uk** to receive a Zoom invitation.



ST JAMES' CHURCH

During the pandemic, regrettably we are unable to meet as a **whole** congregation in church weekly, physically, for worship – however, as we are now allowed limited numbers in church each Sunday, we are live-streaming the services online. You can also view our weekly service on YouTube.

We continue to keep the restrictions under review and will update the village as things in church change. Our thoughts are turning to Christmas, and what we might be able to do, so we will announce our plans in the next month's Rowledge Review.



Sunday Madness

A weekly "gathering" on YouTube, put together by Adele and Beth, suitable for children and young people

Daily Reflections/Thursday Thought

Russ sent out daily reflections for the first 3 months of lockdown, but is now sending out a weekly Thursday Thought



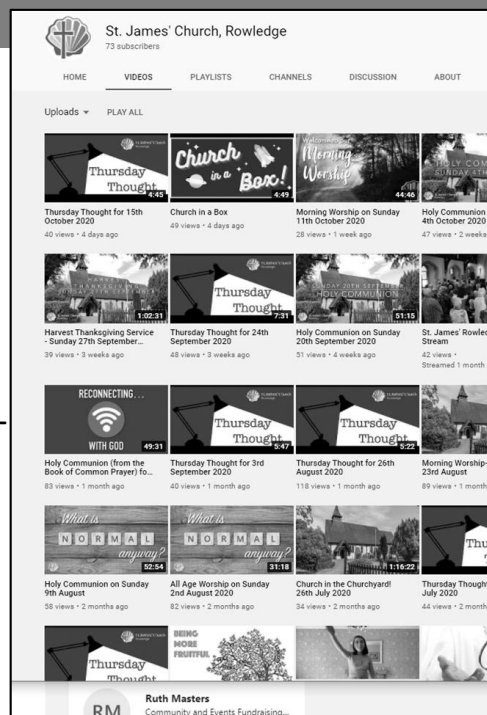
If you want to receive email invitations to any of our online resources, email vicar@stjamesrowledge.org.uk.

Church Services

We are continuing with our live-streamed services each Sunday. Do join us live on our Facebook page:
<https://www.facebook.com/StJamesChurchRowledge>



A mix of formal and contemporary services - if you don't see it live, all our videos can be found on our YouTube Channel:



https://www.youtube.com/channel/UCBO3bsCEfpu4Hd_IFbKX3CQ/videos

November Sermon Series – “In the Wilderness” (cont...)

Continuation of sermon series “In the Wilderness”

1st November - *All Saints*

1 Kings 17: 1-24 “Provision in the Wilderness”
 Elijah and the Widow of Zarephath

8th November - *Remembrance Sunday*

Amos 5: 18-24 “Remembrance Sunday”
 Justice and righteousness

15th November

Matthew 4: 1-11 “The Word in the Wilderness”
 Jesus is tempted by the devil

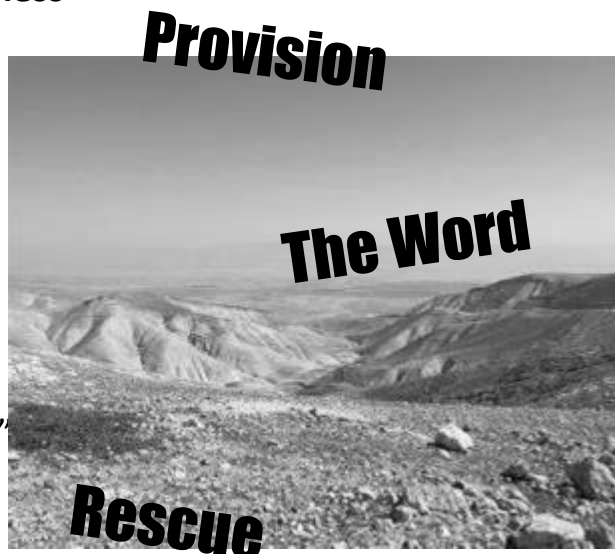
22nd November - *Christ the King Sunday*

Ezekiel 34: 11-16 “Rescue in the Wilderness”
 Pointing towards the coming of the Shepherd King

Start of new sermon series “Light and Darkness”

29th November - *First of Advent*

Genesis 1: 1-5 “Light and Darkness – God of Order”
 Order over chaos is the only reason science works!



CROSBY BUILDING SERVICES LTD

A local firm built upon excellent reputation

New Builds : Extensions : Alterations : Design to Completion

Roofing : Landscaping : Carpentry

Plastering : Painting & Decorating

Bespoke Oak Garages : Garden Buildings : Playhouses

We offer a complete service for all your home improvements

Free quotations & references available

01483 810119

Email enquiries @crosbybuilding.co.uk

www.crosbybuilding.co.uk

Members of the Guild of Master Craftsmen

alpha decor

01252 724675

Complete decorating service

Interior and exterior painting Wallpaper hanging

In business locally for over 25 years

david horne

Clear All Pest Control



Fully qualified professional country services

Specialising in Hornets, Wasps & Moles

Phone Dean on: 07768 986 338 or

www.clearallpestcontrol.com



Life Groups –Tuesday & Thursday

Russ & Jenny Gant run a group on Thursday with about 8 people. They meet weekly via Zoom and are continuing their study on Romans.

The Tuesday group currently have 10 people accessing the group meeting via Zoom. They meet fortnightly for bible study and prayer.

Having completed our series looking at 'Who is the Christ?' ending with 'Christ the Commissioner' they returned to studies of the Parables.

In the weeks between the studies we meet socially on Zoom for a catch up and sometimes prayer if there are specific needs.

Men's Group – First Thursday of the month

We usually meet every 1st and 3rd Thursday of the month in the Old Vicarage and the Hare & Hounds for a pensive pint (or two!) and discussion. Starting with a Bible passage discussion then moves on to ...well, anywhere and everywhere!

During lockdown, the Men's Group has met twice by Zoom - first Thursday of every month. We have had 8 - 11 people joining the meetings, which Roy has stage managed, and Brian has led with some very interesting perspectives on the 10 Commandments, Jesus' teaching on them, and some challenges with complying with them in our modern society. Subject to technology, we hope to continue to meet. All welcome. **To join in, contact Rob: robriscs@aol.com**

Church is OPEN!

Open: Monday - Thursday 10am-4pm.
Saturday - Sunday 8am-8pm.
Closed on Fridays.

St James' Church is now OPEN for **individual private prayers**. Individual private prayer is defined as a person or household entering the church to pray on their own, not as part of a group, and not participating in any form of led prayers or communal act. Those praying should be socially distanced from other individuals or households.

It is sacred space within the village, a refuge for quiet and reflection, and everyone is welcome to visit, or come and sit, to think, to pray, to find some space.





Little Fishes
Nursery School

Helping grow happy, confident kids

Discover a fun and friendly nursery school in a peaceful location on the edge of Alice Holt Forest

2 years + / Qualified & friendly teachers / All-weather garden
Fun daily activities inc forest adventures / Early years funding



BOOK
NOW FOR
SEPTEMBER
2020



Contact us to find out more
www.littlefishesrowledge.org.uk
01252 794617 * St.James' Church, Rowledge
littlefishesnursery@gmail.com



Morning Prayers

Every Wednesday via Zoom™
from 9:00am for half an hour
Email: vicar@stjamesrowledge.org.uk to join



St.James' Church
Rowledge



Farnham Garment Alterations & Tailoring Service

- Ladies & Gents clothing alterations
- Curtains & Soft Furnishings
- Suit / Wedding / Prom & Evening dresses
- One to One fittings by an expert
- Restyling & Repairs
- 1 hr & same day service available
- VIP & Home Visit Service (out of hours)
- Leather & PVC Repair
- Made to Measure Curtains, Upholstery & Garments (Limited options) ask for details

**5 Star express
Gold service at
20% discount**



With over 25 years of experience we can assure you that your garment will be in the best possible hands

01252 444640 www.elitestitch.co.uk
elitestitch12@gmail.com

No appointment required

12 Upper Church Lane, Farnham,
Surrey, GU9 7PW

Always Glazing Works Ltd...

Established 1984
Genuine Local Family Run Business

FREE ESTIMATES. NO JOB TOO BIG OR TOO SMALL

- Table Tops and Safety Glass
- Manufacturers of Lead Lights & Double Glazed Units
- Suppliers & Installers of Pvcu Aluminium Windows & Doors
- Domestic, Commercial, Industrial & Insurance Work Undertaken
- Emergency Shop Front Replacement
- Greenhouse Glass

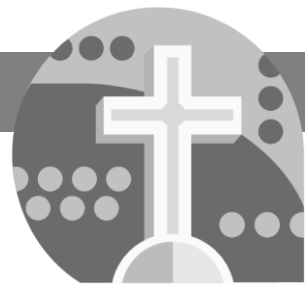
**Quality
Service &
Competitive
Prices**

Unit 6, Farnham Business Centre
Farnham Surrey GU9 7UP
Tel: 01252 727262 Fax: 01252 737779
info@allwaysglazingworks.co.uk
www.allwaysglazingworks.co.uk



FENSA
Registered Company

METHODIST CHURCH



The Methodist Church has begun holding services again. There is limited seating due to virus precautions but seats may be available on occasions. For enquiries please ring: Aileen: 795438

Our prayer chain, led by Mike & Joyce, can be accessed on: 793363

If you would like to speak to Philip, our Minister, his number is: 01240 83167

If you have any questions about activities at the Methodist Church, please contact Aileen or David on 795438



Do you know anyone who is grieving from bereavement and needs more support or time?

Meeting weekly in Farnham, the group is supported by pastoral assistants and bereavement visitors attached to various Farnham Christian churches, and allows an opportunity for those who are bereaved and lonely to meet others who understand.

Bereavement Café meet every Monday afternoon 3 - 4:30pm for tea and chat at

The Spire Café, Farnham United Reformed Church,

South Street, Farnham, Surrey GU9 7QU

If you would like more details please contact Mary on **07999 368128** or info@friendstogetherbereavement.org

There are also occasional evening groups for those who need to talk and share about a bereavement. Parents, Spouses, Children, Friends... Do you know anyone who is grieving and would like support?

**Contact Mary on
07999 368128 for
details during
Covid-19**

You are also welcome to bring someone you know who may benefit from the support group, but not want to attend on their own. Accompanying friends are also very welcome.

ONLINE

Dance-Fitness Classes



ZUMBA®
gold

Tuesdays,
Thursdays and
Fridays 10am



ZUMBA®
fitness

Mondays 8pm
Wednesdays and
Saturdays 10am

£3 per session

Message for details of how to join.

Contact Alison Edwards 0781 397 6841

alizumba835@gmail.com

or ZumbaFun on

CHIROPODIST / PODIATRIST

@ Holly Tree Doctors' Surgery
Boundstone Road, Rowledge

Yvette Mann

(and Associates)

B.Sc. Pod (hons), M.Ch.S., HCPC

Established since 1997

Treatment for all ages:
routine chiropody, nail surgery,
verrucae, foot and lower limb pain,
insoles/orthotics.

Please ring for an appointment:

01252 793183

www.yvettemannpodiatry.co.uk

Also at Lucks Yard Clinic

Milford: 01483 527945

www.lucksyardclinic.com

ROBERT MOODIE

Master upholsterer

Since 1973



Is your sofa or perhaps your favourite chair
In need of a little loving care?
Don't push it aside or take to the 'tip'
Just give us a ring and we'll mend it.

Loose covers or fitted, or down to the frame
We will restore it, elaborate or plain
Fabrics and braids for us to enhance
Our craftsmanship's shown if given the chance.

Specialists in re-upholstery & loose
covers

The Old Milking Parlour,
Mellow Farm
Dockenfield.

01428 712886

hello@arfordupholstery.co.uk

Jane Ireland MCSP
Chartered Physiotherapist
at
HOLLY TREE SURGERY

42 Boundstone Road
Farnham
Surrey GU10 4TG

Conditions treated include:

Back Pain Neck Pain
Leg Pain Arm Pain
All Sports Injuries
Back/Pelvic Pain associated with
Pregnancy

For appointments:

01252 793183

07950 186997

jane_physio@yahoo.co.uk

www.janeirelandphysiotherapy.co.uk

PRISM WINDOW CLEANING

Prompt and friendly local service.

Proprietor Dean Atkins.

www.prismwindowcleaningltd.com

Regular Service, Fully Insured

Tel: 07768 986338



HEARING AID BATTERIES Sue Kelly

With the cessation of the Hearing Aid Clinic at Coffee Spot each month, if anyone needs batteries for their hearing aids, they should contact Audiology at The Royal Surrey hospital by telephone or email.

Give them your name, address and type of battery you need (see brown book). It is usually P13. The response is very good.

rsc-tr.Audiology@nhs.net 01483 464108



FOOD FOR ALL OCCASIONS

TRACEY ELLIOTT

TEL: 07733 464867

www.toyourtaste.co.uk

food@toyourtaste.co.uk

A Year of Rowledge Memories - Hardback Book for Sale

**Limited
Edition**



“The Way of St James” has been commissioned as a photographic record to mark the 150th Anniversary of St James’ Church - the parish church of Rowledge village, lying on the Hampshire/Surrey border.

This beautiful 60-page limited edition ‘coffee-table’ book, features stylish black & white photographs recording a whole year in the Parish, across a wide range of aspects of church life in the village and includes photographs of many residents of Rowledge. Photographs were taken by local resident, Simon Fletcher.

Copies of this limited edition book are available to purchase for £30.

To buy your copy, please contact the Parish Office on 01252 792402 or admin@stjamesrowledge.org.uk or Mike Randall at randallm_e@msn.com



Copies of this limited edition book are available to purchase for £30.

To buy your copy, please contact the Parish Office on 01252 792402 or admin@stjamesrowledge.org.uk or Mike Randall at randallm_e@msn.com

Don't delay - there are only 60 copies available.

All proceeds will go to support the work of the church in Rowledge.



St. James' Church
Rowledge

OPTIPLAN KITCHENS

BOOK YOUR FREE & EXCLUSIVE
DESIGN CONSULTATION

SHOWROOM

EXCLUSIVE TO
YOU

HOME

LET US COME
TO YOU

ONLINE

INTERACTIVE
DESIGN

HANDCRAFTED IN BRITAIN

Call **01252 345 588** or visit
optiplankitchens.co.uk

Find us: 138 Farnborough Rd,
Farnham, GU9 9BD.

DAVE FITCHETT

GARDENING
DECORATING
FENCING, PATIOS and more
01252723389

07754775844



Have you ever considered Live-in Care as an alternative to residential care?



Live-in Care is when a professional and trained Carer lives with you in your home supporting you with your day-to-day needs. For many, having a Live-in Carer enables you to maintain your hobbies, interests and social life.

Tel **01428 690007** Email **enquiries@liveincare.ltd.uk**

**LIVE  IN
CARE LTD**
24/7 PEACE OF MIND
www.liveincare.ltd.uk

More fun on the way



If Brexit and Covid-19 wasn't enough for one year, voters in America will decide on 3rd November whether Donald Trump remains in the White House for another four years.

The Republican president is being challenged by Democratic Party nominee Joe Biden, who is best known as Barack Obama's vice-president, but has been in US politics since the 1970s.

Their first debate, as described by the BBC's Anthony Zurcher, was "the political equivalent of a food fight" with the former vice-president emerging as the man "least covered in slop"!



Alfie Rickwood

AR Landscaping.
Rogate Seale Lane
Seale Farnham Surrey GU10 1LF
07496810445
alfierickwood@yahoo.com

All round handy man


- *Grass cutting (rear roller)
- *Jet washing
- *Fencing
- *Maintenance of gardens
- *Hedge trimming
- *Removal of rubbish

Ring for a free quote 07496810445

Dusting Dollies

Cleaning Services

- ★ Builders cleans
- ★ Sparkle cleans
- ★ Spring cleans
- ★ Domestic
- ★ Commercial
- ★ Ironing
- ★ Carpets
- ★ Ovens



Maria Rickwood

t 01252 783307
m 07824 367182
e maria@dustingdollies.co.uk
www.dustingdollies.co.uk

Dusting Dollies
 Rogate, Seale Lane, Seale
 Farnham, Surrey, GU10 1LF

Men on The Rowledge War Memorial

by Neil Pittaway

Whilst there are still a few WW1 Rowledge Memorial names not yet covered in this series, these two short entries are for the last of our Memorial names associated with WW2.

As we approach Remembrance Sunday, we always consider those listed on our Memorial to have fallen in action, but Albert Pritchard and Jack Ridgley both died in service during WW2 from extremely painful conditions, not necessarily associated with military action.

The fathers of both men served in WW1.

**Albert Eric William Pritchard.
1921-1944.**

**Bandsman. East Yorkshire
Regiment. 4343426.**



Albert Eric William Pritchard was born in or near Rowledge and baptised at St. James on August 7th 1921. His older brother Reginald was also baptised at St. James in 1920. Their parents were Arthur George William Pritchard and Beatrice Louise Pritchard (née Higgs).

Albert's father, Arthur was born and in Lambeth on December 15th 1890 and mother Louise was also born in Lambeth on March 25th 1887.

Baptisms for Albert Pritchard's parents, Arthur Pritchard and Beatrice Higgs.

1887 May 18 No. 1022	Beatrice Louise	John William & Annie	Higgs	23 Wickham St	Cott-smith	H. H. Trethney
----------------------------	--------------------	-------------------------------	-------	------------------	------------	----------------

1891 Feb 22 nd No. 1525	Arthur George William	George Thomas & Florence Beatrice	Pritchard	49 Lockington Road	Artish	Harry Dawson
---	-----------------------------	---	-----------	--------------------------	--------	-----------------

Arthur and Beatrice were married near Waterloo in Lambeth on 14th December 1913. At that time Arthur was a pawnbroker's assistant.



Albert's Commonwealth War Graves Commission memorial headstone at St. James.

It is engraved with these words:

**'I HAVE FOUGHT A GOOD FIGHT,
I HAVE FINISHED MY COURSE,
I HAVE KEPT THE FAITH.'**

**Jack Ridgley. 1908-1944.
Warrant Officer Class II Company
Sergeant Major. Royal Engineers.
1863136.**



Jack Ridgley was born in Bloemfontein, Orange Free State, South Africa in 1908 at the time his father's Royal Field Artillery regiment was stationed there.

Jack's parents were Ernest Alfred James Ridgley and Emily Ridgley, née Trusler. Father Ernest was born in Buckinghamshire in 1874 and mother Emily Trusler in Rowledge in 1878. They were married in St. James, Rowledge in 1905.

Jack's father Ernest fell in September 1914 during WW1 at the Battle of the Aisne and he too is remembered on the Rowledge Memorial. I featured his history in the April 2019 edition of the Rowledge Review. Jack was just six years old at the time his father fell.

At the outbreak of WW2 Jack's mother, Emily was living at Bankside, Recreation Road, Rowledge. Jack had one sister, Kate who was born in Rowledge on 24th September 1913.

There is no easily accessible record to show when Jack Ridgley joined the Royal Engineers but his death record shows that at that time he had a regimental service number of 1863136 and was with the 987th Port Artillery Company on the Isle of Wight.

November 2020

The service number indicates an enlistment in the late 1920's or early 1930's so he likely enlisted prior to his marriage in 1932.

This may possibly have been as a result of a recruitment campaign during the depression.

Jack Ridgley married Gwendoline Vera Parsons at Portsmouth in the autumn of 1932. She was born there on August 31st 1913.

The couple had one daughter who was born on the Isle of Wight in 1933 and a son born in 1939, also on the island.

Jack Ridgley seems to have served his time with the Royal Engineers on the Isle of Wight and was still stationed there when he fell ill with serious appendicitis complications and died in the I. o. W. General Hospital on April 18th 1944. He was 36, married with two children.

Jack Ridgley's headstone is engraved with the words:

'UNTIL THE DAY BREAKS AND THE SHADOWS FLEE AWAY'



Jack possibly enlisted as a result of a Royal Engineers recruitment campaign during the early years of the 1930's depression.



Jack's widow, Gwendoline remained on the Isle of Wight and married there again in 1958 and 1980.

Nigel Gaymer

Interior & Exterior Decorating

For a free estimate with full references
please contact Nigel on:

07951 558443

01252 711260

nigelgaymer@btinternet.com

4 FOUR SEASONS MARQUEES

BEAUTIFUL MARQUEES FOR
EVERY OCCASION



For more information
Call

01420 488477

www.FourSeasonsMarquees.co.uk

Jane Stockdale

HOME COOKING

- for all occasions

Dinners, Luncheons, Buffets,
After Service gatherings,
Tea parties, Children's parties,
cooking for the freezer,
individual dishes.



SPECIALISING
in
**CAKES &
CANAPES**

Please call

01252 723 161 or 077 75 69 69 18

Appliance Repair

Electric Cooker/Hob
Tumble dryer
Dishwasher
Washing machine
Fridge/Freezer*

- Built in and free standing
- New appliances with installation
- Members of **Checkatrade.com**
Where reputation matters

Appliance Expert

*Built in & American style only

Domestic Appliance repair

Elstead (01252) 705198

www.applianceexpert.co.uk

Window Cleaning

Whitbread's Window Cleaning is based on the edge of Farnham. We offer a regular, reliable window cleaning service at a competitive price. We also clean gutters, fascias, soffits, cladding and conservatory roofs. We currently service over 300 clients on a regular basis every 4, 6 or 8 weeks in the Farnham area alone. Call us now on 01252 449561 or 07533 682062 for a free, no obligation quote.



Traditional Chinese Medicine



Michael Ng

LicAc., MBACC

Acupuncturist

4 Swiss Close
Boundstone
Farnham
Surrey

01252 794353

St James ' Church - Annual Parochial Church Meeting

The annual APCM was finally held on Sunday 18th October (after being postponed from the usual April date), reporting on the 2019 year in the life of St James' Church. Due to Covid, however, as with many things at the moment, the meeting was held virtually.

In addition to the usual reports, we said farewell to Mike Randall and Lesley Voice who stood down as Churchwardens after 5 and 11 years respectively. A HUGE "thank you" to both of them for their dedication and commitment to both the church and parish. In their stead, we welcome Karen Fewster and Clive Jourdain as our new Churchwardens.



Retiring Churchwardens



Elected Churchwardens



D & A Flooring
All aspects of flooring

Darren Rickwood
Owner

Rogate
Seale Lane
07789 511333

darren@dandaflooring.co.uk
www.dandaflooring.co.uk

HOME COMPUTER SUPPORT & TUITION - " My PC Home Help ! "

Whether a Home or Small Business user. I can Help with your PC Problems !



- Friendly, Professional Support for PC, iMac & iPad ✓
- Computer Health Checks including Virus Removal ✓
- Hardware & Software Maintenance and Upgrades ✓
- Broadband Wired & Wireless Solutions and Setup ✓
- One To One Home Tuition for All Ages & Abilities ✓
- I Supply, Install and Support PCs, iMacs and iPads ✓

Moving to a New Computer ? - I'll transfer absolutely everything for you !

Contact Richard Siers on Bentley (01420) 22844

or e-mail: enquiries@myPChomehelp.co.uk

visit: www.myPChomehelp.co.uk

*The "What's happening in Rowledge...
...and who to contact?" section*

ROWLEDGE VILLAGE EVENTS CALENDAR 2020



VERY IMPORTANT!!!

ALL ROWLEDGE Event Organisers!!!!

Please email the Editor with event dates for 2020, so we can include it in all future issues of the Rowledge Review. Email: rowledgereview@yahoo.co.uk

Rowledge Activities - Weekly Calendar



Time	Group	Age	Venue
Children's Events			
Mon-Fri			
09.00-15.30	Rowledge Playgroup	2-4	Village Hall
09.00-15.00	Little Fishes Nursery School	2-4	St James Church
Tuesday			
17.00-18.15	Beavers	5-8	Village Hall
18.15-19.30	Cubs	8-10	Village Hall
19.30-21.15	Scouts	10-14	Village Hall
Wednesday			
09.15-11.00	Baby & Toddler Group (term time)	0-4	Village Hall
15.00-19.30	Ballet	3-13	Village Hall
16.45-18.00	Octave children's choir	7+	St James Church
17.00-18.00	Rainbows	5-7	Methodist Hall
18.30-20.00	Guides	10-14	Methodist Hall
19.00-20.30	#hungry (youth group)	11-16	St James Church Hall
Thursday			
18.15-19.45	Brownies	5.30-7	School Hall
Friday			
16.00-18.30	Ballet	13-adult	Village H



Contact details
are in the Village
Directory - in the
centre pages of
the Rowledge
Review.

Adults' Events

Monday			
08.30-09.00	Morning Prayers		St James Church
14.00-16.00	Steady Steps		Village Hall
19.30-21.00	Bruce Yoga		Village Hall
19.30-21.30	Pilates		Village Hall
Tuesday			
09.30-11.30	Ballroom Dancing		Village Hall
09.30-10.30	Zumba Gold (term time only)		Village Club
10.40-11.40	Pilates		Rowledge Club
14.00-17.00	Quilters (fortnightly)		Methodist Hall
19.00-20.00	Pilates		St James Church Hall
19.30-21.15	Community Choir		Frensham Heights School
19.45- 22.00	Womens Institute (3 rd T		The Rowledge Club
20.00-22.30	After 8 ladies group (1 st day)		Homes
Wednesday			
08.30-09.00	Morning Prayers		St James Church
10.30- 12.00	Mother's Union		St James Church
14.00-15.00	Nordic Walking		Forest (St James gate)
14.00-16.00	Cameo Singers (2 nd &4 th Wed)		Methodist Hall
15.00-16.00	Healing (1 st Wed)		Methodist Church
19.00-22.15	Bridle Path		Village Club
19.00-20.00	Pilates		St James Church
19.45-22.30	Rowledge Club		Village Hall
Thursday			
09.00-16.00	Teachers		Methodist Hall
10.00-12.00	Art Club		Village Hall
12.30-1.30	Luncheon Club (last Thursday)		Methodist Hall
14.30-15.30	Steady Steps		Village Hall
18.00-19.00	Boot Camp		Village Hall
18.00-19.00	Gardening Club (2 nd Thursday)		Village Hall
18.00-19.15	Bootcamp		Village Hall
20.30-23.00	Men's Group (3 rd Thursday)		Hare and Hounds
Friday			
08.30-09.00	Morning Prayers		St James Church
09.00-12.00	Coffee Spot		Village Hall
16.00-18.30	Ballet		Village Hall
19.00-20.00	Choir practice		St James' Church
Sunday			
19.45-20.45	Ballroom Dancing		Village Hall

ROWLEDGE DIRECTORY – 2020



ST JAMES' CHURCH – Church Lane, Rowledge, GU10 4EN

Vicar	Revd Russ Gant	01252 792402	vicar@stjamesrowledge.org.uk
Churchwarden	Karen Fewster	01252 795169	karenfew@gmail.com
Churchwarden	Clive Jourdain	01252 794171	clive@clivejourdain.plus.com
PARISH ADMIN	Hannah Epps	01252 792402	admin@stjamesrowledge.org.uk

Pastoral Assistants

Parish Friends Coordinator	Elaine Andrews	07928 208 590	daveandelaine@hotmail.com
----------------------------	----------------	---------------	---------------------------

Youth Work

Children's Minister	Adele Regan	07791 103 895	Adele.regan@stjamesrowledge.org.uk
Little Fishes Nursery	Judith Parish	01252 794617	littlefishesnursery@gmail.com

Church Officers and Group Leaders

PCC Secretary	TBA		
Hon Treasurer	Andrew Fewster	01252 795169	andrew.fewster@gmail.com
Director of Music/Organist	Vacant		
Planned Giving (M'ship)	Mike Randall	01252 792007	randallm_e@msn.com
Planned Giving (Admin)	Andrew Fewster	01252 795169	andrew.fewster@gmail.com
Electoral Roll Officer	David Pennington		david@dpcon.eu
Cathedral Link	Colin Honey	01252 794317	
Church Cleaning Team	Maria Doland	01252 793984	
Coffee Rota	Jan Clarke	01252 793661	jan.8@btinternet.com



Rowledge Review

Editor/Creative	Tony Carpenter	01252 793060	rowledgereview@yahoo.co.uk
SEND ARTICLES TO:	Editor	-	rowledgereview@yahoo.co.uk
Advertising	Maggie Blyth	01252 790660	maggie.v.blyth@gmail.com
Distribution	Church Office	01252 792402	admin@stjamesrowledge.org.uk

Church Charities

Children's Society	<i>Vacant</i>		
Christian Aid, Rowledge	Elaine Andrews	07928 208 590	daveandelaine@hotmail.com
USPG	Janet Cunningham-Christie	01428 609290	





METHODIST CHURCH, Chapel Road, Rowledge. GU10 4AP

Minister	Rev'd Philip Simpkins	01420 83167	
Office	-	-	aileen.m.ashby@gmail.com
Church Steward	Aileen Ashby	01252 795438	aileen.m.ashby@gmail.com
Church Steward	Anne Chuter	01252 792685	
Church Steward	Paul Fry	01252 794748	Paul.fry@btinternet.com
Church Steward	Alison Morrice	01252 794471	
Lettings / Hall Bookings	Lynda Godfrey	01252 792479	
Luncheon Club	Aileen Ashby	01252 795438	aileen.m.ashby@gmail.com
Healing Service	Joyce Williamson	01252 793363	jm.williamson@homecall.co.uk

Activities for Children

Little Fishes Nursery School	Judith Parish	01252 794617	littlefishesnursery@gmail.com
Baby & Toddler Group	Miranda Billowes	07977 539 315	rowledge toddlergroup@gmail.com
Rowledge Playgroup Pre-School	April Pegler	07751 366392 or 07806 784035	rowledgeplaygrp@aol.com
Ballet	Maureen Hamilton	01428 656402	maureen@almondndance.com
Playball	Nicola Stubberfield	07919 123008	playballsurrey@gmail.com
Beavers	Rachel Mason	01252 794195	rkmason1904@gmail.com
Cubs	Richard Baines-Walker	07968 587642	richard.banes-walker@struttandparker.com
Scouts	Colette Grist	07879 406 926	colette.grist@yahoo.co.uk
Brownies	-	-	rowledgebrownies@gmail.com
Rainbows and Guides	Rachel Britton	01252 591631	rachel_vasey@yahoo.com
Rowledge After School Club	School Office	01252 792346	
Bootcamp	Olivia Gardner		olivia_g@hotmail.com
Roller skate club	Adam Collis		rowledge@skateclubs.org
Rowledge Football Club	Catherine Greenwood	01252 781785	catherine.greenwood@tribalgroup.com

Schools

Rowledge C of E Primary School Head Teacher	Sarah Oliver	01252 792346	admin@ rowledge.hants.sch.uk
Co-Chair of Governors	Helen Davies		
Co-Chair of Governors	Tom Nixon		
Friends of, Chair	Caroline Eaton	07710 463311	caroline_eaton@me.com
Frensham Heights School	Rick Clarke - Head	01252 792561	admin@frensham-heights.org.uk

Village

Residents' Association	Jeff Ward	01252 795773	wardjeff99@btinternet.com
Village Fayre Chairman	Kelly Taylor	07940 549102 01252 790722	Les_taylors@yahoo.co.uk
Tree Warden	Brian Greig	01252 793762	

Village Hall

Chairman	Richard Baines-Walker	07968587642	
Treasurer	John Phipps		treasurer@rowledgevillagehall.com
Secretary	Karen Fewster	01252 795169	karenfew@gmail.com
Bookings	Susie Duffy		bookings@rowledgevillagehall.com

Police

Surrey	101	Hampshire	101
--------	-----	-----------	-----

Charity Representatives

Cancer Research	Jenny Crawford	01252 793517	
RNLI	Nigel Cuthbert		rnli.farnham@btinternet.com
Save the Children / CHIKS	Robin Radley	01252 794212	robin.radley1@btinternet.com

Social Groups

After 8 Group for Women	Sue Gardner	01252 793903	susan@gatec.co.uk
Alice Holt Women's Institute	Grada Helsdon	01252 727824	aliceholtwi20@gmail.com
Art Club	Roger Warburton	01252 793813	rwarburton@btinternet.com
Coffee Spot	Liz Thomas	01252 793802	liz_thomas118@yahoo.co.uk
Community Choir	Edwin Rolles	01420 541966	edwinrolles@hotmail.co.uk
Quilters	Sue Stephens	01252 794375	suestephensuk@btinternet.com
Patchers	Sandra Bigg	01252 792082	sandratbigg@hotmail.com
Farnham Conservatives	Wyatt Ramsdale	07771 674634	Wyatt.Ramsdale@surreycc.gov.uk
Qigong	Julian Jaffe		Julian.jaffe@computer-agents.com

Sports /Activity Groups

Badminton Club	Jeff Kelly	01252 625612	jeffmkelly@virgin.net
Ballroom Dancing	Angela Cobley	07732 556170	angelaschoolofdancing@hotmail.com
Bowling Club Captain	Ken Wickenden	01252 794413	twix.crossroads@talktalk.net
Bowling Club Chairman	Colin Smith	01252 792453	colin.smith747@btinternet.com
Bowling Club Secretary	Sue Stephens	01252 794375	suestephensuk@btinternet.com
Bridge Club			Occasionally in Rowledge Review
Cricket Club Chairman	Carl Baker	07768 325701	carl@carlbaker.co.uk
Cricket Club General Secretary	Lynley Griffiths	01252 710534	lynley.griffiths@talktalk.net
Nordic Walking	Sue Gardner	01252 793903	susan@gate.co.uk
Pilates/Yoga/Zumba	Hannah Epps	07855 291833	hannah@farnhampilates.com
Yoga	Bruce Hawkins		bruceyoga@hotmail.com
Steady Steps	Louise Neave	07875 330440	louise@steadystepsphysio.co.uk
Tennis Club	Kelly Taylor	07940 549102	info@rowledgetennis.org.uk
Rowledge Gardening Club	Roy Gardner	01252 793903	chairman@rowledgegardeningclub.org.uk
Zumba	Alison Edwards	0781 397 6841	ianandalison1@tiscali.co.uk
Hand-bell Ringers	James Morrice	07854 382598	j.morrice@hotmail.com

Welfare

Care Farnham	David Ashby	01252 795438	
Care Farnham	Duty Officer	01252 716655	
Phyllis Tuckwell Support Group	Mandy Main	07904 531337	
Doctors' Surgery	Holly Tree Surgery	01252 793183	
Chiropractor	Anna Maynard	01252 793183	
Surrey Victim Support	[24 hr]	01483 770457	
Hampshire Victim Support	[24 hr]	01252 342777	



Councillors

Surrey County Council	Wyatt Ramsdale	07771 674634	wyatt.ramsdale@surreycc.gov.uk
Hants County Council	Mark Kemp-Gee	01420 563550	marknkempgee@aol.com
E Hants District Council	Ken Carter	01420 22576	Ken.Carter@easthants.gov.uk
Farnham Town Councillor	Paula Dunsmore	01252 710009	Paula.dunsmore@farnham.gov.uk
Binsted Parish Coun. [Clerk]	Sue Hodder	01420 520692	clerk@binstedparishcouncil.org.uk
Binsted Parish Coun. [Dep Clerk]	Karen Ray		depclerk@binstedparishcouncil.org.uk www.binstedparishcouncil.com
Binsted Parish Coun. [Chair]	Ron Neil		r.neil@binstedparishcouncil.org.uk
Binsted Parish Coun. [V.Chair]	Debbie Brooks		d.brooks@binstedparishcouncil.org.uk

Edward Hare Pickersgill

What's the connection between Rowledge and the 'Jack the Ripper' murders? Well, none actually, except of the most tenuous kind through the residence in Rowledge of Mr. Edward Hare Pickersgill. I shall explain later.

Several prominent politicians have been associated with Rowledge one way or another. One such politician who lived, albeit briefly, in Rowledge, during the Revd. A.W. Parker's ministry, was Mr. Edward Hare Pickersgill (1850–1911). Pickersgill died on 13 October 1911. According to the *Farnham Herald*, the news was greeted with 'consternation and regret' in Rowledge. Pickersgill had been staying for a short vacation in Rowledge until ten days before his death and had seemed fine. He had acquired a 'country residence' in Rowledge some seven years before, after he had married a certain Miss Zimmerman. He had lost his first wife the year before that. Mr. Pickersgill was a celebrated liberal politician who lived his last seven years in Rowledge at his country retreat, The Wilderness, on Boundary Road. He sat in the Commons from 1885 to 1911. The *Farnham Herald* reported that he died at the residence of his sister in Putney from pneumonia.

"The news was received at Rowledge on Friday night with regret and surprise, Mr. Pickersgill, having been staying at his country residence, the Wilderness, Rowledge, for a short vacation till about 10 days before his death and appearing then in his usual good health."

Although the Parish Magazine generally eschewed politics, it has sometimes reported local political debates, in particular in the early twentieth century. In 1907, for example, Mr. Henry Devenish Harben lectured locally several times on cruelties in the Congo. In 1908, tariff reform was widely discussed. The Primrose League held many meetings in Rowledge – it stood for the maintenance of religion, of the estates of the realm, of imperial ascendancy, preventing disestablishment of the church of England, against the abolition of the Lords, and for a strong army and navy. And Mr. E.H. Pickersgill's talks on liberal reform were reported in the early part of the century. Pickersgill was something of a celebrity and a *bête noir* of the establishment. The son of Thomas Pickersgill, an architect of York, he was educated at York Grammar School and was called to the bar at the Inner Temple in 1884, and practiced as a Treasury counsel at the Old Bailey.

At the 1885 general election, Pickersgill was elected Member of Parliament for the newly formed constituency of Bethnal Green South West. He was regarded as being on the radical wing of the Liberal Party, and campaigned for reform of criminal law, in particular seeking to end imprisonment for non-payment of debt. He also sought the abolition of the death penalty and the ending of flogging as a punishment. He must have been very active as Hansard records 1,627 Parliamentary contributions!

From 1892 to 1895 he was a Progressive Party member of the London County Council

representing Hackney Central. At the "khaki" general election of 1900 he lost his seat to a Unionist opponent, but regained it six years later when there was a swing to the Liberals. He held the seat at the two general elections of 1910, but resigned from the Commons in July 1911. His death at the early age of 61 came as a surprise.

Pickersgill was sufficiently widely known to be immortalised by 'SPY' (Leslie Worth) in *Vanity Fair* in March of 1886. The caricature is rather uncomplimentary, which may well have been influenced by his liberal politics, which made him unpopular with many. He was an implacable opponent of the, then, Home Secretary, Henry Mathews. His desire for criminal reform and the abolition of the death penalty made him even less popular when the country was gripped by a febrile horror at the 'Jack the Ripper' murders.

Between 3 April 1888 and 13 February 1891, 11 separate murders were included in a London Metropolitan Police Service investigation and known collectively as the "Whitechapel murders". At least five of these, and possibly more, were the work of 'Jack the Ripper'. It is difficult to appreciate the panic these evinced and the furore they created in public circles, in particular in the Commons. Each time a new murder was discovered, panic spilled over into condemnation of the police and the authorities and the home secretary.

Recently discharged from hospital, Jane Beadmore, 27, went to buy some sweets to take with her medicine on 22 September 1888, and failed to return home. A search party was organised at dawn and her body was found near a railway line at Birtley Fell, Gateshead. Jane had been stabbed three times in the breasts, but additionally, as *The Times* put it, 'the injury to the lower body had been terribly cruel'. Effectively she had been disembowelled.

The whole country was in the grip of the Jack the Ripper murders. Was this another Ripper killing, everyone wondered? Had the beast of Whitechapel moved north to Durham? All was revealed when William Waddell, a 22-year-old Gateshead factory worker, was arrested and charged with Jane's murder. Waddell, it seemed, had been going out with Jane, but she had refused his intimate advances. On the night he killed her she had been complaining about his drunkenness. Once he realised that she was dead, he said, he decided to make it look like a Ripper killing. A defence of manslaughter was rejected and he was hanged on Tuesday, 18 December 1888, at Durham Prison.

Enter our friend, Edward Hare Pickersgill, a thorn in the side of the home secretary. Pickersgill kept raising the question whether Waddell had been properly cautioned by the police? Had his rights been respected? The feverish concern about the murders did not make concern for the rights of murderers popular and Pickersgill's energetic campaign for the abolition of the death penalty made him more unpopular still. This unpopularity even had one MP implying that Pickersgill was related to Jack the Ripper. One of the several men who were suspected of being the Ripper was Montague Druitt, a Winchester-educated barrister whose suspicious suicide by drowning in the Thames

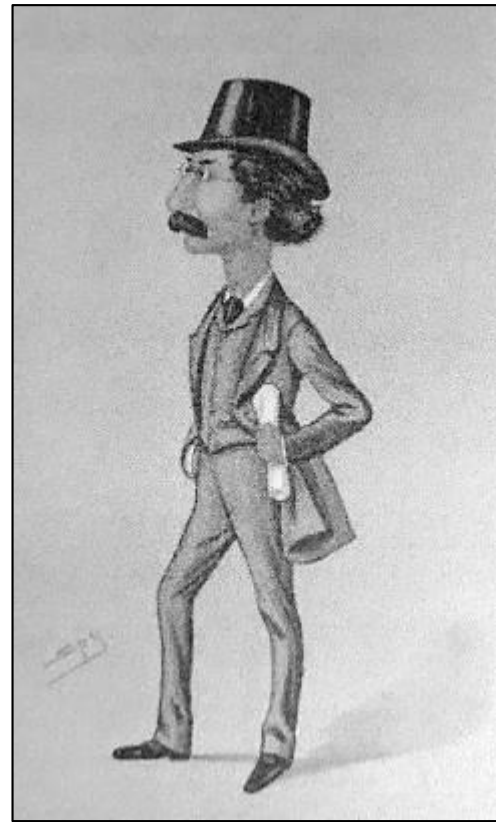
coincided with the end of the Ripper killings. The Conservative, Henry Farquharson, who coveted Pickersgill's Bethnal Green seat, pointed out that Edward Hare Pickersgill was related to the Druitts by marriage (Pickersgill even sat the same law exam as Montague). His implication that Pickersgill was related to 'Jack the Ripper' was a scurrilous guilt-by-association tactic. Politics has always been a dirty business.

Farquharson went on to make other defamatory claims; In the 1892 election, he libelled his opponent, a Mr. Gatty, and was forced to pay £5,000 damages a year later, an enormous sum.

So, the link between Rowledge and Jack the Ripper is pretty tenuous; but at least in writing about Pickersgill, I've had some appalled pleasure in reading about the Ripper killings.

E.H. Pickersgill

The liberal politician, who divided his time between London and The Wilderness, on Boundary Road



Farnham Foodbank needs your help!

Can you help fill a couple of volunteer opportunities?

Driver wanted

We need someone who has a large car or a van who is able to transport food and deliver food boxes. They need to be an experienced driver and physically capable of carrying heavy bags and boxes. It would be working on an ad hoc basis and the Foodbank would cover transport costs at 45p per mile.

Packers wanted

We need people to help pack bags on Monday and Thursday afternoons. This would be on a reserve basis to fill in when existing volunteers already doing this role are away, unwell or having to self-isolate. Volunteers would need to work in pairs (so ideally suited to a couple or two family members as they would not need to social distance) and would need to be able to carry heavy bags and reach for food from shelves which can exceed head height.



If you can help, or have any queries, please contact:
Anne Blackman (01252 793344) **THANK YOU!**

Farnham Foodbank

At this difficult time, please do support your local Foodbank.

Donations can be made at St. James' Church, Rowledge Co-Op, Waitrose or at Anne Blackman, 12 Prospect Road or Mike Randall at Poplars, 7 The Avenue.

There is a huge increase in need at the moment, especially from those families who would usually be reliant on school dinners.

To access the Foodbank should you be in need, please see contact details below.

WEBSITE - <https://farnham.foodbank.org.uk>

EMAIL - info@farnham.foodbank.org.uk

You can also contact St. James' Church Office to collect Foodbank vouchers.

The Church Office,
Church Lane,
Rowledge,
GU10 4EN.

PHONE - 01252 792402

EMAIL - admin@stjamesrowledge.org.uk

The Foodbank would also be very grateful for any financial contributions you feel moved to make.

If you have any queries, do contact:
Anne Blackman (01252 793344)

THANK YOU!

"The Foodbank was there when we really needed it, it was an absolute lifeline."

Foodbank urgently need:

**Tinned Potatoes,
Dried milk powder,
Vegetable oil
Raisins**

At the moment they have plenty of:
Cereals, Biscuits, Pasta, Tinned vegetables, Baked beans, butter beans, chick peas, kidney beans, lentils, long life fruit juice and UHT milk

NEW Foodbank Vouchers

St James' Church is now able to issue Foodbank vouchers for those in need. To be eligible for an emergency food parcel as an individual or a family, you will need to be referred with a voucher from the church office.

Your referral will be completely confidential. If you or someone you know is in need then please contact the church office on 01252 792 402.





St.James' Church
Rowledge

Harvest Thanksgiving in the Churchyard

Harvest



St James' recently celebrated Harvest in a different way. Due to Covid, and in order to allow as many people as possible to join us, we held an outdoor service in the churchyard.

Gifts were brought for Foodbank...and Adele and Beth introduced their talk with a sparkle...and a steady hand!

If you want to find out the reason for the champers...listen to the service on YouTube.

<https://www.youtube.com/watch?v=1Phdcn2u1L8>

Rowledge Remembers

This year, St James' Church in collaboration with members of the community are putting interactive and visual displays around the village for all ages to get involved with Remembrance Day.

Rowledge Primary School and local uniformed organisations will be getting an activity booklet for them to work through over the two weeks the displays are up. Children will be searching the village for the 'there but not there' perspex soldiers and learning about those who went from this village to fight in WW1 and WW2. If you have children or grandchildren who will not receive a work book through the school or their uniformed organisation, then please get in touch with me at

adele.regan@stjamesrowledge.org.uk

and we will arrange to have one delivered.

This is not just for children though, we hope you will all take some time to walk the village and learn about our past. There will also be a beautiful display of hand knitted poppies hanging from the Hare and Hounds. These poppies have been lovingly knitted/crocheted by local people and a huge thanks goes out to everyone who got involved in making the display so beautiful.

Albert, named after one of the fallen of Rowledge during WW1 is an installation covered in poppies and will be moving around the village during the two weeks. If you spot him please take time to reflect on how much was given by others for our today.

A big thanks to Mandy & Graeme Main who have been instrumental in the organisation of Rowledge Remembers. But the biggest thanks of all goes to the men and women, past and present who made the ultimate sacrifice to keep this country safe.

So much of our day-to-day is different now, but we will always remember them.



Sadly, Remembrance Sunday will have to look quite different this year. We cannot hold a Service of Remembrance in church as we are currently limited to only 18 available seats.

National uniformed youth organisations such as the Scouts, Guides, Cubs and Brownies have urged their members not to attend (this is to prevent the possible cross-contamination of school pods).

As of the date of going to print, central government has issued new legal requirements that state that *“only local authorities in England can organise outdoor Remembrance Sunday events at a public war memorial or cenotaph...”* this means that, as the local church, we are excluded from organising the act of remembrance as we have done for the last almost 100 years. This is because, unlike in some parishes, our war memorial is on public land rather than on church-owned property. I am urgently seeking further clarification from Hampshire County Council on what, in my opinion at least, is ridiculous legislation issued at the very short notice. HCC are of course, not to blame. It may be that they are happy to be the organiser, whilst we lead the event locally, but with 286 other parishes in the County, I cannot imagine HCC wanting to have any involvement in such arrangements.

The new requirements also state that the number of those participating in any remembrance event should be strictly limited and that those ‘observing’ should adhere to the rule of six and maintain social distancing at all times.



What I have therefore proposed to HCC is the following:

- We lead the event locally under their ‘permission.’
- A short act of remembrance take place at the war memorial at 10:50am.
- The wreath laying party be limited to:
- The leader of the local Parish Council
- A representative of the Armed Forces
- A representative of young people
- A representative of the local churches
- The bugler



Should you wish to attend to observe the act of remembrance, you are encouraged to attend in household groups only, or groups of no more than six from other households and maintain the 2 metre social distancing requirements at all times.

All of this is very challenging as we seek to, first and foremost, ensure public safety, but also honour our war dead. But as I have stated earlier in this edition, how we remember is not as important as the need to ensure that we do remember. Standing in silence, with family in the garden, or the street at 11am is just as poignant an act. Should the plans outlined above need to change again prior to the event, we will seek to communicate via the Rowledge Residents Association email chain and the Church website – stjamesrowledge.org.uk

 *Pride and Groom* 

*GROOMING FOR ALL
BREEDS OF DOG*



- *Bathing*
- *Grooming*
- *Clipping*
- *Trimming*

For a friendly and professional
service please ring:

Jenny

07790 595576

A. STRUDWICK

YOUR LOCAL
Painter & Decorator
Interior & Exterior
Paper Hanging Specialists
General Building Repairs
Burglary Prevention

PHONE : 01252 792077

Andrew Pearson Plumbing & Heating Engineers

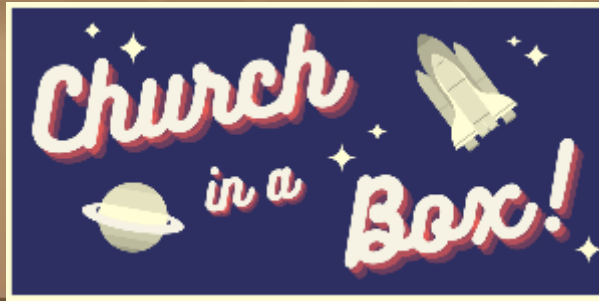
- Full bathroom suite installations
- Central heating systems
- Power shower systems
- All work guaranteed

Free quotations

0777 038 6827

0777 598 7773





St James' Church is offering a free weekly **"Church in a Box!"** as we are currently unable to welcome children into the church building safely on a Sunday morning.

"Church in a Box!" is for families who either already come to church on a regular basis, those who come every now and then, or have never set foot in the building!

"Church in a Box!" includes 4 different sections that families can work through together in fun and exciting ways including games, baking, Bible stories and challenges.



If you live in and around the village
and have a family who would be interested in this,
then please contact Adele Regan (Youth and Children's Minister):
adele.regan@stjamesrowledge.org.uk.

CHILDREN'S ACTIVITIES at St James



Despite the current restrictions due to Covid, our Children's team are still finding ways to engage with the children in the village.

The Zoo was back on 21st September. Hooray!

A lovely walk through Alice Holt – though things were a bit different, they had so much fun!



The Zoo doing the Blessing in Makaton.



...and Little Fishes

Look what our Little Fishes Church Nursery has been up to. Beautiful work children!

As part of our Autumn theme, we all helped create an Autumn tree using leaf rubbings and hand prints as leaves.

The Spirit of Wenceslas lives on

This has been a difficult year for many with lockdown, furloughs and redundancies. Although Government regulations prevented fuel companies from pursuing bills and cutting customers off for the time being this has only served to delay the inevitable build up of debt. Consequently Farnham Lions are launching Project Wenceslas again this year. Lions are inviting those senior citizens who feel they do not need their Winter Fuel Payment to donate it to the Club to help local people in serious **fuel debt** or chronic **fuel poverty** who are finding it hard to keep warm and cook in winter.

This has been a strange year due to the pandemic precautions. Prior to lockdown Lions distributed some £7,700 in respect of fuel debt cases referred to us by Citizens Advice and a large number of discretionary grants to needy families identified to us by local Barnados Family Centres, Home-School link workers and other agencies. Following lockdown a further £9,331 has been distributed via the Farnham Coronavirus Support Fund and the agencies so far and the need for help is not slackening.

Every payment is made to the fuel utility companies on behalf of our clients thus ensuring that **ALL** monies received are spent on fuel.

Donations can be made to www.justgiving.com/lions-wenceslas or by cheque (payable to the Lions Club of Farnham and endorsed WFP on the back) sent to Lion Treasurer, 1 Acheulian Close, Farnham GU9 8PL.

YOU can make a difference to a family in your community.

Many parents need help, friendship, advice or support during those early years when children are young. Your experience as a parent can help others. There are a variety of ways you can volunteer for Home-Start WeyWater.



Home Visiting Volunteer – Home-Start provides a unique service for families – recruiting and training volunteers to support parents with young children at home.

Trustee - with your skills and experience you will have an input on how our scheme runs and develops in the future.

‘Friend’ - you can help us raise our profile in your community and help with our ongoing fundraising.

Home-Start WeyWater, c/o Chase Children’s Centre, Budds Lane, GU35 0JB
Tel - 01420 473555 E-mail - office@homestart-weywater.org.uk

E.N. Benjafield. Who was he? Do you have a photograph?

I often look at this picture of The Square and with a strong interest in old vehicles, more often than not I wonder how old the Aldershot and District bus sitting in front of the Hare and Hounds is!



Well the bus fits a late 1920's Dennis Bus catalogue (cost £885):

However, the picture tells me that the Post Office/Grocers looks well established in the name of **E.N BENJAFIELD** and he did not arrive in Rowledge until about 1929. For most of the 1920's the Benjafield family lived in Market Place, Blandford, certainly from 1925 until 1928. One assumes they returned from Singapore after WW1.



Edward Newport Benjafield was Wiltshire farmer John Benjafield's son, born in Cranborne Chase in 1874. His mother was Eliza Harding. This is his baptism in 1875:



By 1881 the Benjafields had moved to Sparsholt, N.W. of Winchester where John was farm manager at Mere Court farm.

Edward clearly was not interested in becoming a farmer for in 1899, at the age of 23, he left the UK on the 'Glengarry' for Singapore and became a warehouse manager there. He seems to have been a passenger with several missionaries, but this was not apparently to be his calling.

Port of Embarkation.	Names of Passengers.	Age of each Adult of 12 years and upwards.				Children between 1 and 12 years.		Infants.		Profession, Occupation, or Calling of Passengers.
		Married.		Single.						
		M.	F.	M.	F.	M.	F.	M.	F.	
London	Mr H W B. Delafont			1						None
"	Sister Mary Josephine				1					Missionary
"	" Aquinas				1					"
"	" Peter				1					"
"	Rev. W. Van. Mens			1						"
"	" B. Wensink			1						"
"	" H. Jansen			1						"
"	Mr E. M. Benjafield			1						None
"	Mr W. J. Blair			1						"

Around 1903 Edward Newport Benjafield married Grace Lilian Cam, possibly in Singapore and they had three children, two in Singapore, one in England occasionally travelling between the two locations.

Up to 1901 Edward's wife to be, Grace was living in Bristol with her parents, her father being a cashier for a wholesale merchants. Somehow before 1903 she must have arrived in Singapore.

Edward and Grace's first child, Eric Nelson Benjafield was born in Singapore in 1905.

Their second child, Eileen Grace Benjafield may have been born on her paternal grandparent's farm in Wiltshire and definitely baptised in Bristol close to her mother's parents. It is that record that tells us that her father was a warehouse manager in Singapore:

1908	Eileen Grace	Edward Newport + Grace Lilian	Benjafield	Singapore	Warehouse Manager	Edmund Martin
No. 1029						

The birth of their third child, Queenie Benjafield in 1912 was back in Singapore.

A shipping record for 1913 shows E. N. Benjafield, his wife and one infant returning to Singapore where presumably their two other children remained. One can imagine this was a trip to bring their latest child, Queenie to her grandparents.

Towle	Mr. W.	2	Singapore
	Mrs.	2	=
9	Master	2	=
Benjafield	Mr. E. N.	1	=
	Mrs.	1	=
	Infant	1	=

The electoral registers show that Edward Newport Benjafield lived at The Post Office from 1929 until at least 1947. By his death in 1949, aged 75, he was living in 26 Christmas Avenue, Aldershot.

The 1939 U.K. register shows the family in Rowledge showing their dates of birth and their respective roles at the Post Office.

Post Office	199	1	Benjafield, Edward N.	✓ M	7 Sept 74	M	Grocer & Postman
		2	Benjafield, Grace L.	✓ F	14 Sept 75	M	Unpaid Domestic Duties
		3	Benjafield, Eric N. H.	✓ M	21 Oct 05	S	Grocer Assistant
18.4.50 E.N. M		4	Benjafield Eileen S.	✓ F	2 Feb 08	S	Post Office Assistant
		5	Benjafield, Queenie	✓ F	2 May 12	S	Grocer Assistant

This 1939 register was kept updated well into the 1970's, hence Eileen's surname being amended. They were used as records for the NHS when it was formed post WW2. Unpaid domestic duties was the term used by the enumerator in this 1939 register for housewife.

The record shows that Eric was a Grocer's Assistant as was his sister, Queenie whilst sister Eileen seems to have run the post office. In 1950, soon after her father's death, Eileen married Richard Swarbrick in Aldershot. She died in 1985 aged 77.

Neither Eric nor Queenie married. Eric died in 1984 aged 79 and Queenie in 2009 aged 97. Both had been living in 26 Christmas Avenue, Aldershot.

Edward's wife, Grace Lilian Cam died in 1950, a year after her husband. She too was at that time living at 26 Christmas Avenue, Aldershot. She was 75.

Does anyone have a photograph of the Benjafields at the Post Office, maybe with the long serving landlord of the Hare and Hounds, James Bicknell who was there from 1905 until about 1951. He served for 46 years, three years longer than St James' Rev Arthur William Parker, 1871-1914!

Rowledge School have been reinforcing the importance of anti-bullying in school.

We are proud to say that it is very rare for us to have any incidents of bullying in our school, as our values are embedded and we proactively teach children about kindness.

A recent school assembly reinforced this fantastically. On the video link below you will hear a little bit from me and then see The Big Anti-Bullying Assembly:

<https://www.youtube.com/watch?v=PfTTU8bc6nU>



**MAKE PEOPLE
FEEL LOVED
TODAY**

Teachers have been talking to the children about them ALL being anti-bullying ambassadors. We have signed up for the training, however it is not currently running due to COVID.

Over a few weeks the children have also taken part in the Support Network Activity (attached) and we will find a place to display their hands in school.

There is more helpful information here:

<https://www.antibullyingpro.com/>

See the video...Who are in your 5-person network?

Put your hand up and make the Anti bullying pledge!

Grandfather

Father

Ham



Catherine

Grandmother

"I saved
↙ £21,248"

Real words, from a new resident who made the most of our stamp duty offer.

Our retirement villages are home to people who really value their peace of mind... people who moved safely during lockdown, to enjoy more savings, more choice, and a closer kind of community.

Visit safely > complete swiftly > move securely.
Complete by 31st December 2020, pay £0 stamp duty,
plus, receive £6,000 of help-to-move services*

**BRAMSHOTT
— PLACE —**

Inspired in Hampshire

Get in touch now to move early 2021. Call **01428 787 458** or visit **bramshottplace.co.uk**

*Terms and conditions apply. See website for details.



1st Call
PROFESSIONAL BY NATURE

- Local Authority Approved
- Fully Insured
- NPTC Qualified Staff
- Free Quotations
- Domestic & Commercial Contracts

Farnham 01252 782252 Guildford 01483 425266 Alton 01420 525292
24 Hour Emergency Call Out www.1stcalltrees.com info@1stcalltrees.com

Volunteers Needed at Phyllis Tuckwell!

Local charity Phyllis Tuckwell Hospice Care is looking for more volunteers to help it provide its vital care for patients and families who are living with an advanced or terminal illness, such as cancer.

It has volunteer vacancies in many different areas of its care. If you fancy flexing your retail muscles, how about a role in one of its charity shops, serving customers, operating the till, and sorting, steaming and pricing stock. Those with good customer skills will relish this role, and flexible morning or afternoon shifts will allow you to fit it in around your other commitments.



Volunteers help out on Phyllis Tuckwell's reception, greeting visitors, managing deliveries and answering the phone

For those who would like to offer direct support to patients, a role in the Home Support team might be something which you would find rewarding and enjoyable. Before the pandemic, the charity's Home Support volunteers would visit patients for a chat, or perhaps take them out for a cup of tea at a coffee shop or garden centre. At present, their support is given through phone calls or garden visits, but is perhaps even more important to patients who can feel isolated because of the restrictions the pandemic has caused. Home Support volunteers are asked to support patients for three hours once a week, and are given initial training and ongoing supervision to help them in their role.

For those who are looking for a diverse and fast-paced role, and have good IT, admin and communication skills, maybe a shift on reception at the Hospice in Farnham, or Beacon Centre in Guildford, would be of interest? From greeting visitors and managing deliveries, to answering phones and putting calls through to different teams, there is much variety and no day is the same! Weekday and weekend shifts are available.

A similar role is available on the Hospice's In-Patient Unit, where volunteer Ward Clerks are needed to help greet visitors, assist with admin tasks and answer the phone. Empathy and good communication skills are a must, and vacancies are available during the week and at weekends.

All volunteers taking on a patient-facing role will require a DBS check and will be given training. To find out more about any of these roles, please contact Phyllis Tuckwell's Voluntary Services team on 01252 729400 or email voluntary.services@pth.org.uk. Just a few hours of your time can make a big difference to those who are facing such a difficult time in their lives.

Church Website –Take a look! Updated regularly

www.stjamesrowledge.org.uk

Take a look at our website.

Full of interesting information and details of everything going on at St James'.

We'd love to hear your comments.



BED AND BREAKFAST

IN AID OF CHIKS CHARITY



(for orphaned children in Southern India, run by a village resident)

On the edge of Rowledge Village, a double en-suite ground floor room is available with plenty of off road parking.

Full English breakfast and a warm welcome.

01420 22292 annfoster222@gmail.com



WEST END FLOWER FARM
— Farming in Froyle since 1920 —

The flower farm is open for walks around the farm, see the rose field and wander the lake; well behaved dogs are welcomed too. In addition the farm has a B&B and self-catered cottage so please do bear us in mind for visiting families and friends.

West End Flower Farm Shop and Kitchen in Upper Froyle, just outside Alton is now open to the public from Wednesday – Sunday.

The kitchen serves brunch, lunch and afternoon tea using local produce and delicious cakes. The farm shop has fresh flowers, gardening items and local artisan products too.

Please do come and visit us **www.westendflowerfarm.co.uk**

2 mornings a year volunteer! - Village Tidy-Up

Having coordinated the Village Tidy-Up twice a year, for many years on behalf of the Residents Association, Phil Thomas would like to hand over the reins to someone else.

If you want to help keep the village looking spic and span, please speak with Phil or Jeff Ward who will explain what is involved in this important and highly valued role.



philthomas36@btinternet.com

wardjeff99@btinternet.com

Fun time

Thieves who steal corn from a garden could be charged with stalking.

A thief fell and broke his leg in wet cement. He became a hardened criminal.

A thief who stole a calendar got twelve months

To write with a broken pencil is pointless.

We'll never run out of math teachers because they always multiply.

Old farm owner John farmed a small farm in Hampshire. The Council claimed he was not paying proper wages to his workers and sent an agent out to interview him. 'I need a list of your employees and how much you pay them,' demanded the agent. 'Well,' replied old John, 'There's my farm labourer who's been with me for 3 years. I pay him £600 a week plus free room and board. The cook has been here for 18 months, and I pay her £500 a week plus free room and board. Then there's the half-wit who works about 18 hours every day and does about 90% of all the work around here. He makes about £10 per week, pays his own room and board and I buy him a bottle of bourbon every Saturday night.' 'That's the guy I want to talk to, the half-wit,' says the agent. 'That would be me,' replied old farmer John.

Rhoda and Harry go for a meal at a Chinese restaurant and order the 'Chicken Surprise.' The waiter brings the meal, served in a lidded cast iron pot. Just as Rhoda is about to serve herself, the lid of the pot rises slightly and she briefly sees two beady little eyes looking around before the lid slams back down. 'Good grief, did you see that?' she asks her husband, Harry. He hasn't, so she asks him to look in the pot. Harry reaches for it and again the lid rises, and he sees two little eyes looking around before it slams down. Rather perturbed, he calls the waiter over, explains what is happening, and demands an explanation. 'Please sir,' stammers the waiter, 'what you order?' Harry replies, 'Chicken Surprise.' 'Ah! So sorry, is mistake' says the waiter, 'I bring you Peeking Duck!'

			3		4			
	1	2				8	9	
	6						2	
6				5				4
			1		7			
3				6				1
	9						5	
	7	8				6	4	
			9		8			

Sudoku Each puzzle has a solution that can be reached logically without guessing. Enter digits from 1 to 9 into the blank spaces. Every row must contain one of each digit. So must every column, as must every 9 space shape.



Abbeyfield

Wey Valley Society



Care homes with a difference
providing Residential & Nursing care in Farnham

- * Fees reflect charitable status
- * Locally sourced home cooked food
- * All rooms are spacious with en-suite facilities
- * Wide range of activities
- * Large input from Volunteers
- * Weekly summer outings
- * Pleasant gardens in every home

All homes provide a real 'home from home'

Please contact us on 01252 712021 or 899000

Email: admin@abbeyfieldweyvalley.co.uk

www.abbeyfieldweyvalley.co.uk

STRUTT & PARKER
BNP PARIBAS GROUP

Proper partners

Emma & Will

We don't have clients. Just friends.

If you are thinking
of selling your home
contact us today
struttandparker.com
01252 751623

Rowledge Village Hall News



Rowledge Village Hall update

The Trustees are pleased to welcome back to the hall some of our regular groups.

Angela and her Line Dancers returned in August with reduced numbers. Maureen is back with her ballet dancers from toddlers upwards. The Badminton group is playing weekly with six people in line with Badminton England guidelines. Roger and his Art Group are back with a small group.



The Preschool continue to use the main hall Monday – Friday during term time. The children continue to thrive. The staff manage the drop-off and pick-up using timed slots and social distancing.



The Scouts, Cubs and Beavers have been meeting in outdoor settings since September. They are returning to the hall after half term.

All groups have risk-assessed their activities in line with Government guidelines and advice from their national bodies where appropriate.



The halls will be closed during half-term week for electrical work which is being managed by our new committee member, Nigel Armstrong. The floors will be resurfaced over Christmas.

We welcome Graham Knights as a new Trustee.

Karen Fewster is standing down as Secretary after many years of sterling work. She has agreed to continue as a Trustee. Thank you, Karen!

For the time being, it is sadly not possible to open Coffee Spot. We miss all our regulars and helpers. The committee will review this again after Christmas.

The Long Road, Rowledge, Farnham, Surrey GU10 4DH.
Reg'd Charity 305115 Website: www.rowledgevillagehall.com.
Email: info@rowledgevillagehall.com



EDITORIAL

PLEASE NOTE: The official deadline for copy for the December issue of the Review is *FRIDAY 13th November 2020.... LATEST DATE!!*

Please either send articles through email: **rowledgereview@yahoo.co.uk**

or leave your masterpieces in the pigeonhole provided in St James' Church.

We always welcome your contributions and would love to hear from anyone who think they could contribute a series of articles on a theme – any subject considered.

Please also continue to notify us of any required changes to the Directory listing.

ADVERTISING

Rowledge Review Advertising

Maggie Blyth handles our advertising sales.

If you want to promote your business through these pages, you can contact Maggie on:

01252 790660 maggie.v.blyth@gmail.com

Please send articles to **rowledgereview@yahoo.co.uk** not to anyone else's personal email accounts.

Thanks



PJ Welch

Electrical, Plumbing, Gas

Mobile: 078 765 64 63 0

01252 721251

Pwelch700@gmail.com



PART P

REPLACEMENT BOILERS

CYLINDERS

BOILER REPAIRS, SERVICING, LANDLORD CHECKS

BATHROOMS, KITCHENS, TAPS & SHOWERS

LED LIGHTING, FUSEBOARDS, FAULTS

EXTRA POINTS, CAT6, TV MOUNTING

BARRINGTONS **SOLICITORS**

Residential Conveyancing
Wills & Probate
Powers of Attorney
Corporate / Commercial
Commercial Property
Employment & Settlement Agreements
Debt Recovery
Equity Release / Lifetime Mortgages

6 St George's Yard
Castle Street
Farnham
GU9 7LW
Tel: 01252 741751

www.barringtons-solicitors.co.uk
info@barringtons-solicitors.co.uk

THORNE LEGGETT

Independent family funeral directors

Geoffrey M. Thorne M.B.I.E Dip F.D L.M.B.I.F.D

Gill Thorne Dip F.D L.M.B.I.F.D

Michael Thorne Dip F.D. L.M.B.I.F.D

Robin Thorne Dip F.D. L.M.B.I.F.D.

Simon Goff Dip F.D

Here to support you in your time of need.

Immediate 24 hour assistance

8-10 The Street, Wrecclesham, Farnham, Surrey, GU10 4RP
Farnham 01252 715520

www.thorne-leggett.com



Nash Electrical Services

39 Boundstone Road, Farnham, Surrey GU10 4TW

Domestic and Commercial Contractors
Rewires, Extensions, Alterations
Inspection, Testing and Certification
Fault Finding and Repair
No Job Too Small



Fully 'Part P' Compliant
Established 1980



Phone: 01252 794178 www.nashelectrical.co.uk

ROWLEDGE GARAGE MOTOR ENGINEERS

Rowledge Garage supply and fit all makes of tyres.
We also carry out full wheel alignment and adjustments.

Phone : (01252) 792379

Mobile : 07442 490521

Martin Hoare

ROWLEDGE, FARNHAM, SURREY GU10 4AA
E MAIL: ROWLEDGEGARAGE@BTCONNECT.COM

