



ROWLEDGE Review

90p

July 2020

(No issues April/May/June
due to Covid-19)

**We're
back!**

***Fullers Road
Retirement
Village
Proposal
Page 43***

***How
St James'
Church is
responding to
Covid-19
Page 5***

Rowledge • Boundstone
Holt Pound • Bucks Horn Oak



Produced for the community by

St. James' Church
Rowledge

The Hare & Hounds



Fresh home-cooked food and a friendly welcome.

Lockdown Take-Aways available

*A touch of Irish charm
at the heart of the village.*



The Square, Rowledge, GU10 4AA

Tel: 01252 792287

MARTIN CASHMORE FENCING LTD

SUPPLIER & CONTRACTOR

Our family run business was established in 1982. We are located just outside Farnham on the A325. We stock a large quantity of Fencing Materials, Oak and Softwood Sleepers, Gates, Wire Fencing, Tools, Fittings and much more.

We offer a prompt delivery service to a wide area.

We supply and install all types of Fencing and Gates, please contact us for a free quote.

01420 521040

jake.mcfsales@btinternet.com



www.martincashmore.co.uk

Unit 2, Halfway Farm, Dockenfield Road,
Bucks Horn Oak, Farnham, GU10 4LP





From the Vicarage

“Opening Up”

Here we are, in what might be the most challenging phase of living through a global pandemic, the time of gradually relaxing restrictions and seeking to return to some form of normality – although I’m sure that’s still a long way off. Now is the time we need to exercise particular caution so as not to move ahead too far, too fast, even though surely what we all need is a jolly good party – or at the very least, a hug!

As I write this, we have just reopened the Parish Church, currently only for private prayers, but hopefully this is a move towards reinstating services of public worship. Whenever this happens, services will no doubt look and feel quite different, assuming social distancing measures remain for a considerable time. We will certainly need to continue to offer ‘online worship’ which appears to have proved popular during the lockdown.

As our shops, churches, and perhaps soon restaurants and pubs start to open up, I reflect on the fact that during this time of lockdown, the irony is many of us too have ‘opened up’ in a way that perhaps we might not have done otherwise. I have heard of neighbours who previously shared no more than a quick “Good morning”, but who are now actively enjoying proper conversations and helping each other out as best they can. Many have been much more open to talk about how they are really feeling, rather than the customary “I’m fine,” which we all know, often means the exact opposite. Street-wide ‘WhatsApp’ groups seek to ensure everyone has the shopping they need and are often first to pick up on the needs of the most vulnerable. And our own church-based “Parish Friends” team has done a fantastic job and maintaining regular contact with those most in need in our community.

I want to encourage us not to lose this new-found openness to true community. It can sometimes feel easier to hide behind a false smile, a smart demeanour, or the electric gates, but from personal experience I know this only works for a short time. St. Peter writes in his first pastoral letter:

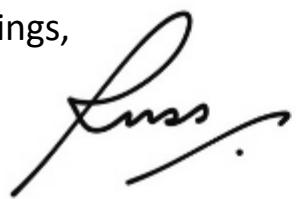
“Do not let your adorning be external - the braiding of hair and the putting on of gold jewellery, or the clothing you wear - but let your adorning be the hidden person of the heart... which in God's sight is very precious” (1 Peter 3: 3-4).

In other words, don’t let a put-together outward appearance hide what’s really going on inside. When we allow others to see our real, true self, with all our frailties, struggles and questions, it is both very freeing for us, but also a great privilege for those with whom we are honest. Conversely, I have found there is no one harder to help than the person who will not acknowledge and open up about the truth of their situation.

We are told that if we are not very careful, there could be a tsunami of mental health issues coming our way. So as and when the country opens up, why don’t we commit

to being more open and real with one another and might I also suggest, with God? He knows us better than we know ourselves and if we cannot tell anyone else how we are really coping – with loneliness, or home-schooling, or endless Zoom meetings, we can be totally honest with Him. And whilst you might not always hear an audible response, my experience is that prayer is the easiest form of ‘opening up’ that I have ever known, as well as the most freeing.

Blessings,



Russ Gant, Vicar



PARISH REGISTER

Funerals

June Bell	21st November	June Coleman	2nd March
Ernest Foard	25th December	Maureen Round	22nd March
Harold Henwood	26th December	Rosemary Penrose	23rd March
Patricia Hudson	31st January	Mary Parratt	3rd April
John Titmuss	29th January	Eileen Johnson	22nd April
John Tracy-Kelly	27th February	Eleanor Webb	15th May
		Carole Stone	13th June

IN OUR PRAYERS

If you have any specific prayer requests you are invited to email prayer@stjamesrowledge.org.uk (or contact Russ by phone) who will ensure the church prays for your situation.



Morning Prayers

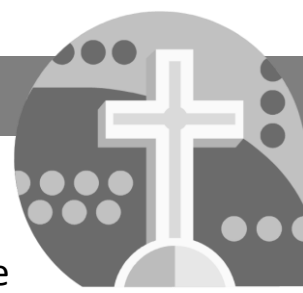
Morning Prayer is every Wednesday at 9:00am. We will continue to meet virtually for approximately half an hour. Email vicar@stjamesrowledge.org.uk to receive a Zoom invitation.

METHODIST CHURCH

At the present time all activities at The Methodist Church are suspended. We hope that the church will be able to be open for private prayer as soon as we are permitted. In the meantime we have a prayer chain which can be accessed on 793363

If you would like to speak to Philip, our minister, his number is: 01420 83167.

If you have any questions about activities at the Methodist Church, please contact Aileen or David on 795438

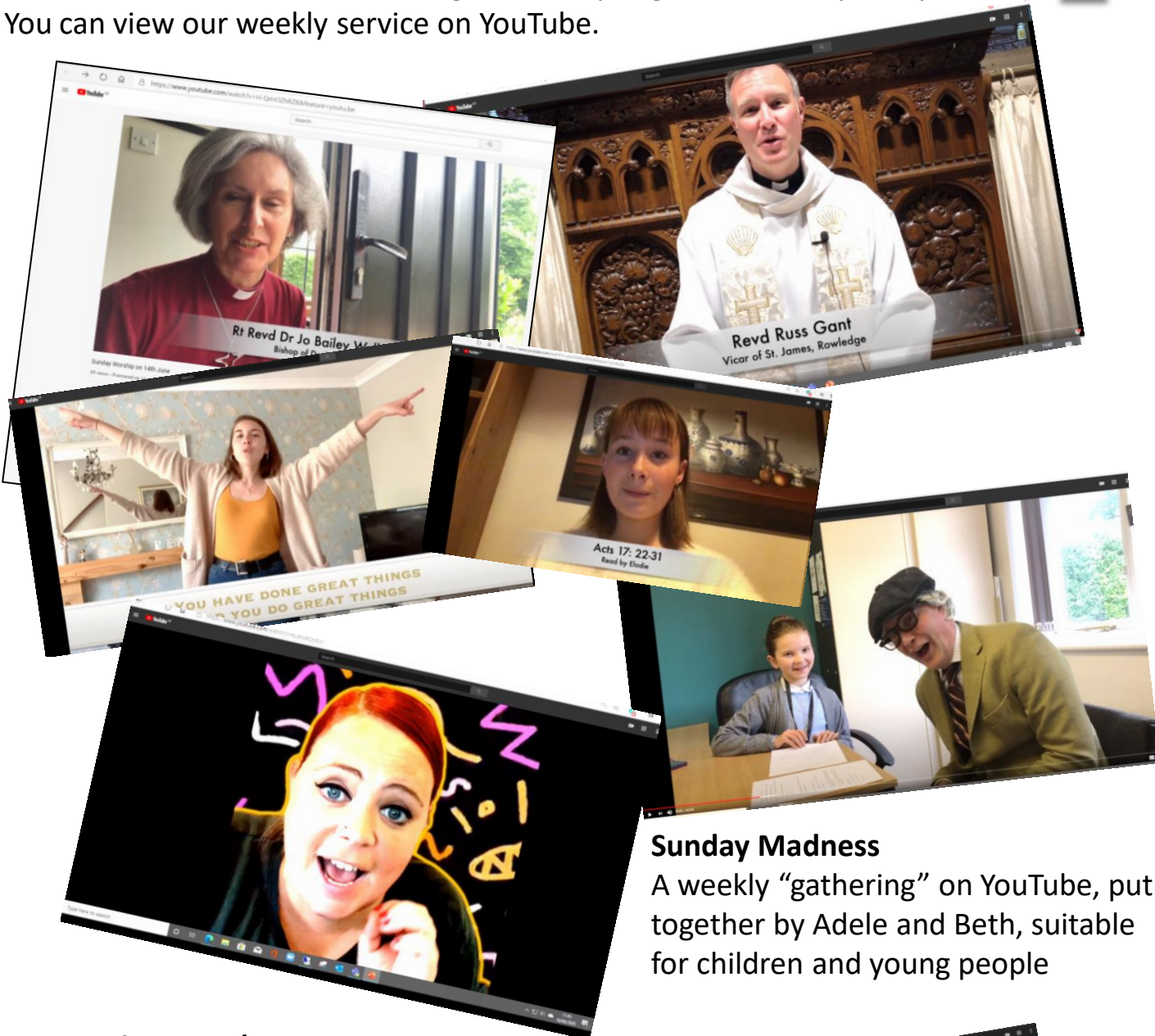




ST JAMES' CHURCH – JULY SERVICES

Sunday services – we still “MEET”!

During lockdown, regrettably we are unable to meet physically for worship – however, we have been continuing to worship together virtually every week. You can view our weekly service on YouTube.



Sunday Madness

A weekly “gathering” on YouTube, put together by Adele and Beth, suitable for children and young people

Daily Reflections/Thursday Thought

Russ sent out daily reflections for the first 3 months of lockdown, but is now sending out a weekly Thursday Thought



If you want to receive email invitations to any of our online resources, email vicar@stjamesrowledge.org.uk.

CROSBY BUILDING SERVICES LTD

A local firm built upon excellent reputation

New Builds : Extensions : Alterations : Design to Completion

Roofing : Landscaping : Carpentry

Plastering : Painting & Decorating

Bespoke Oak Garages : Garden Buildings : Playhouses

We offer a complete service for all your home improvements

Free quotations & references available

01483 810119

Email enquiries @crosbybuilding.co.uk

www.crosbybuilding.co.uk

Members of the Guild of Master Craftsmen

YOU can make a difference to a family in your community.

Many parents need help, friendship, advice or support during those early years when children are young. Your experience as a parent can help others. There are a variety of ways you can volunteer for Home-Start WeyWater.

**Home
Start**

Support and friendship
for families

Home-Start WeyWater
Alton, Bordon & Liphook

Home Visiting Volunteer - Home-Start provides a unique service for families - recruiting and training volunteers to support parents with young children at home.

Trustee - with your skills and experience you will have an input on how our scheme runs and develops in the future.

'Friend' - you can help us raise our profile in your community and help with our ongoing fundraising.

Home-Start WeyWater, c/o Chase Children's Centre, Budds Lane, GU35 0JB
Tel - 01420 473555 E-mail - office@homestart-veywater.org.uk



Little Fishes
Nursery School

Helping grow happy, confident kids

Discover a fun and friendly nursery school in a
peaceful location on the edge of Alice Holt Forest

2 years + / Qualified & friendly teachers / All-weather garden
Fun daily activities inc forest adventures / Early years funding



BOOK
NOW FOR
SEPTEMBER
2020



Contact us to find out more
www.littlefishesrowledge.org.uk
01252 794617 * St.James' Church, Rowledge
littlefishesnursery@gmail.com



Morning Prayers

Every Wednesday via Zoom™
from 9:00am for half an hour
Email: vicar@stjamesrowledge.org.uk to join



St.James' Church
Rowledge

Little Fishes Nursery School reopens to the community

While many nurseries and pre-schools closed completely during the Coronavirus lock down, Little Fishes Nursery School remained open for the children of key workers and vulnerable children.

At the same time, the Little Fishes staff were working incredibly hard, deep cleaning and preparing the nursery school ready for the government announcement that they could reopen. This came on Sunday 24th May and Little Fishes was delighted to welcome back over half of their regular children on Monday 1st June.

"The environment, toys and books have all been thoroughly cleaned and anything that we can't easily clean during the session has been stored away" said Nursery School Manager Judith Parish. "We're cleaning regularly during the sessions, keeping the number of children per session low in line with government advice and spending as much time as possible outside. The children have coped extremely well with all the changes and have settled back brilliantly. They've enjoyed being reunited with some of their friends and seem to be thriving on the extra stimulation and routine."



Little Fishes
Nursery School



FOOD FOR ALL OCCASIONS

TRACEY ELLIOTT

TEL: 07733 464867

www.toyourtaste.co.uk

food@toyourtaste.co.uk

Life Groups –Tuesday & Thursday

Russ & Jenny Gant run a group on Thursday with about 8 people. They meet weekly via Zoom and are continuing their study on Romans.

The Tuesday group currently have 10 people accessing access the group meeting via Zoom. They meet fortnightly for bible study and prayer and are following the programme as detailed on the Church Website. Having completed our series looking at 'Who is the Christ?' ending with 'Christ the Commissioner' they are now returning to our studies of the Parables for the remainder of this term. In the weeks between the studies we meet socially on Zoom for a catch up and sometimes prayer if there are specific needs.

Men's Group – First Thursday of the month

We usually meet every 1st and 3rd Thursday of the month in the Old Vicarage and the Hare & Hounds for a pensive pint (or two!) and discussion. Starting with a Bible passage discussion then moves on to ...well, anywhere and everywhere!

During lockdown, the Men's Group has met twice by Zoom - first Thursday of every month. We have had 8 - 11 people joining the meetings, which Roy has stage managed, and Brian has led with some very interesting perspectives on the 10 Commandments, Jesus' teaching on them, and some challenges with complying with them in our modern society. Subject to technology, we hope to continue to meet - **next meeting 2nd July 8 pm** All welcome. **To join in, contact Rob: robriacs@aol.com**

Church is OPEN!

**Open: Monday - Thursday 10am-4pm.
Saturday - Sunday 8am-8pm.
Closed on Fridays.**

St James' Church is now OPEN for **individual private prayers** only. Individual private prayer is defined as a person or household entering the church to pray on their own, not as part of a group, and not participating in any form of led prayers or communal act. Those praying should be socially distanced from other individuals or households. The Government will continue to work with the Task Force towards the full reopening of places of

worship as soon as the scientific advice allows.

It is sacred space within the village, a refuge for quiet and reflection, and everyone is welcome to visit, or come and sit, to think, to pray, to find some space.



A Year of Rowledge Memories - Hard-back Book for Sale

**Limited
Edition**



“The Way of St James” has been commissioned as a photographic record to mark the 150th Anniversary of St James’ Church - the parish church of Rowledge village, lying on the Hampshire/Surrey border.

This beautiful 60-page limited edition ‘coffee-table’ book, features stylish black & white photographs recording a whole year in the Parish, across a wide range of aspects of church life in the village and includes photographs of many residents of Rowledge. Photographs were taken by local resident, Simon Fletcher.

Copies of this limited edition book are available to purchase for £30.

To buy your copy, please contact the Parish Office on 01252 792402 or admin@stjamesrowledge.org.uk or Mike Randall at randallm_e@msn.com



Copies of this limited edition book are available to purchase for £30.

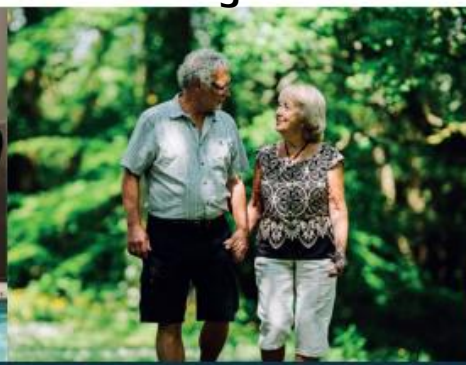
To buy your copy, please contact the Parish Office on 01252 792402 or admin@stjamesrowledge.org.uk or Mike Randall at randallm_e@msn.com

Don’t delay - there are only 60 copies available.

All proceeds will go to support the work of the church in Rowledge.



St. James’ Church
Rowledge



Happier and healthier or your money back.

At Inspired Villages we believe our stunning properties, first-class facilities, focus on holistic well-being and real community spirit offer the key to the very best retirement.

Our belief is so strong we now offer a money-back guarantee: If you don't have a better sense of well-being and feel happier after six months with us, we guarantee to return your deposit in full.

Experience the *best* years of your life?

Get in touch for more details:

Inspired
Villages

The *best* years of your life?

01428 787 458

inspiredvillages.co.uk/guarantee

*Terms & conditions apply, see above link for more details

HANDCRAFTED KITCHENS
MADE IN BRITAIN

OPTIPLAN
KITCHENS

0% INTEREST FREE*

*Terms & Conditions Apply. Credit subject to status & affordability. Minimum deposit required upon order.

VISIT **OPTIPLANKITCHENS.CO.UK**
OR VISIT YOUR LOCAL SHOWROOM TO
SEE ALL OUR LATEST OFFERS

FIND US AT
Optiplan Kitchens

138 Farnborough Rd, Farnham GU9 9BD
call us on **01252 345588**

Congratulations! - celebrating 60 years of perfect married bliss

What's been happening in lockdown?

Well, one couple in Rowledge received a card from Her Majesty which arrived through their letter box recently via special delivery.

Bob and Anne Blackman were celebrating 60 years of perfect married bliss with never a cross word. As they said:...."you cannot be serious!! ...with the last eleven years of that time spent in dear old Rowledge.

We are so lucky to live amongst such a kind and caring community, particularly during the current corvid-dominated problems.

We give very many thanks for our dear children and grandchildren and for the many blessings that have come our way; we are indeed most fortunate.

Very best wishes".

Bob and Anne Blackman.



Knitting in Lickfolds Road - and beyond.

During lockdown needles have been clicking in Rowledge. Several people have taken up an old skill and knitted square for blankets and children's garments. All the items are sent to Christian Hope International who distribute them in Rwanda and Eastern Europe. Apart from knitters in Lickfolds Road we have contributions from School Road, Farnham and Rochester, Kent.

If you've time on your hands to knit a square: size 8/4mm needles and 40stitches with DK wool. Knit sufficient rows to make a square. Contact, Aileen 795438



Morning Coffee anyone?

During Lockdown there has been morning coffee served on the driveways at the corner of Lickfolds Road. A core of regulars meet and together with passing walkers we enjoy conversation, coffee and company. We have only missed 2 days due to inclement weather since Lockdown began and it has proved a great opportunity to get to know neighbours.



One highlight was the VE Day afternoon tea when Tea, scones and jam were served. All this activity has taken place with 2 metre distancing observation and hand sanitizer available. Do drop in if you are passing and Lockdown is still in place.

Aileen Ashby

ROBERT MOODIE Master upholsterer Since 1973



Is your sofa or perhaps your favourite chair
In need of a little loving care?
Don't push it aside or take to the 'tip'
Just give us a ring and we'll mend it.

Loose covers or fitted, or down to the frame
We will restore it, elaborate or plain
Fabrics and braids for us to enhance
Our craftsmanship's shown if given the chance.

Specialists in re-upholstery & loose covers

The Old Milking Parlour,
Mellow Farm
Dockenfield.
01428 712866

hello@arfordupholstery.co.uk

Jane Ireland MCSP Chartered Physiotherapist at **HOLLY TREE SURGERY**

42 Boundstone Road
Farnham
Surrey GU10 4TG

Conditions treated include:

Back Pain Neck Pain
Leg Pain Arm Pain
All Sports Injuries
Back/Pelvic Pain associated with
Pregnancy

For appointments:

01252 793183

07950 186997

jane_physio@yahoo.co.uk
www.janeirelandphysiotherapy.co.uk

 *Pride and Groom* 

*GROOMING FOR ALL
BREEDS OF DOG*



- *Bathing*
- *Grooming*
- *Clipping*
- *Trimming*

For a friendly and professional
service please ring:

Jenny

07790 595576

A. STRUDWICK

YOUR LOCAL

Painter & Decorator

Interior & Exterior

Paper Hanging Specialists

General Building Repairs

Burglary Prevention

PHONE : 01252 792077

Andrew Pearson Plumbing & Heating Engineers

- Full bathroom suite installations
- Central heating systems
- Power shower systems
- All work guaranteed

Free quotations



0777 038 6827

0777 598 7773



Swift Ones Bike Treasure Hunt while in Semi lock down

After the 4th week of semi lock down, I decided over the Easter weekend “how can I get some fun out of riding on your own & trying to involve other members”. So, I came up with an idea of an MTB treasure hunt.

I carefully positioned a bunch of cards with a letter on each around the areas we normally ride together and came up with some clues to lead other riders to those locations. They then had to take a picture of that card and once they collected the 10 cards send me the word which they believe is the correct one to see if they won. I carefully hid the cards so they would not be removed by others and to make it a bit of fun, I sent the clues out over a few days so to increase the suspense and to keep the hunt going longer.

We have such beautiful countryside close by and I thought this is the best way to keep our group together but also keep people entertained as they did their daily solo exercise.



The uptake from our members was great and the banter on the group WHATSSAP was so competitive which just made it for me as they tried all tricks to find the cards. Some of the members even dragged their families out on the ride to look for them so it was a perfect way to enjoy some exercise for all.

As we enter another few weeks of semi lock down we will have to do another one as it was so well received and this time maybe I will make them a little harder this time round.

Thank you to all our Key workers for the excellent job they do in these hard times we are facing.



Pic take from a previous group ride at Xmas before social distances.

Year 5 go to Hogwarts

Prior to lockdown, coming back from half-term Year 5 were all ecstatic about the weeks ahead. When we first set foot in the classroom, it was truly magical. We all came to school dressed in our Hogwarts robes and prepared to be sorted into their houses. Each of us sat down after one another, our hearts racing while the sorting hat balanced on our head. A bag was shown to us and we immediately knew what would happen next. We reached inside to find our destined house, our family awaiting. But how did we know what our future held? Before school started again, a letter arrived at our homes, explaining our upcoming School term. We were all going to Hogwarts for a topic based around the Harry Potter books.

On our first day back we wrote an imaginary diary entry about receiving our Hogwarts letter and ticket to class 5 ¾. This is an extract from one of our diaries:

Dear Diary,

I don't know how to tell you this, but I've just received a letter from Hogwarts School of Witchcraft and Wizardry. You won't believe how relieved I am. You see, I come from a wizarding family, so getting this letter was a big deal. Everyone in my family go one, so I didn't want to let them down. But a scene just kept on playing in my head on what would happen if I didn't get into Hogwarts, every time I blinked it was like hitting the replay button over and over again. That's when I heard it.

Remember the Marauders Map? Well, we've made our own footsteps. On them we put three resolutions for the New Year, one based on friendship, another on what we could do better in class and one for at home.

Over this half term we have used computers to create digital art based on the battle of Hogwarts. We used photographs of ourselves in-front of a green screen and added our own backgrounds. We learned about how J.K Rowling describes her characters and created our own. We were able to invent our own potions and write a set of instructions for a potion book. In science we have looked at forces to learn how Harry flies his broomstick and we are learning all about the game of Quidditch.

Next half term we are very excited to be visiting the film studios and learning how the Harry Potter books were brought to life.

BY Rosie Harris & Isabelle Noble







Agent Oliver *MISSION:LEARNING*

Secret Agents in Rowledge

Children and parents at Rowledge C of E Primary

are all working undercover as Secret Agents during the pandemic.

Headteacher, Agent Sarah Oliver, and Deputy Headteacher, Agent Joe Yates, wanted to ensure that, despite the challenging times, the children had a fun theme to get them through! 'We would never undermine the seriousness of our current situation, but always want to focus on fun, well-being and motivation', reported Agent Oliver.



A film was made, mission impossible style, to send the operatives undercover with all the tools that they could need. Secret missions are sent out daily from the HQ email.

A second film highlighted the teachers' undercover missions at home, where one teacher, Agent Woolcott, showed themselves working undercover from a wheelie bin! Parent Agents are helping to get photos and evidence back to HQ.

Morale remains high at HQ and in the undercover homeschooling.

A third film was made with an Easter chicken twist! Sue Jones, the school's PE Agent, has been encouraging physical exercise every day and said that she was really impressed with the commitment. Like all schools, the staff are determined to keep things going. Agent Hill, one of the Year R teachers said, 'We just can't wait for them all to be back safely'.



Rowledge Review

The Rowledge Teacher Agents on a very special mission to wish everyone a Happy Easter - and they never disappoint!

Agent H-H

Agent Fraser

Agent Everett

Agent Jackson

Agent Tuppen

Agent Wells

Agent Oliver

Agent Woolcott

Agent Leibold

Wishing you all a
safe, healthy and
happy Easter!

Reg' Gard'ner and the Miracle of Mount Olivet - Part One

It is surprising how little people know of the curious history of More House School. Some coverage, for example in an article on 12th September of 2014 in the Farnham Herald in an article called "The Days when Frensham had its Very Own Circus", whets the appetite. Nevertheless, casual enquiries reveal few of those living in Rowledge, only a mile down the Long Road, were aware of it. The article in the Farnham Herald was based on a recently published book by John Chuter, entitled "The Early Life Story of a Frensham Boy". Frensham, he says, was always widely known for its attractions; in particular, Mother Ludlum's cauldron in the parish church and, of course, the two ponds. But, in the 1930s, there was something else too – the Frensham Circus. *"Brother Joseph," he writes, "was a brilliant conjurer and also acted as ringmaster, in his grey monastic habit and top hat. His act was the grand finale at the end of which the circus ring was covered with flowers which he produced magically from several sources, including his flowing robe."* Brother Joseph? A circus? A grey monastic habit? In my researches into Rowledge, I naturally sought more information about this Brother Joseph and the improbable existence of a 'Frensham Circus'. The end result of a great deal of research, was a book which More House School recently published, entitled "More and More, the Miracle at Mount Olivet". I thought it might be timely to acquaint readers of the Rowledge Review with this astonishing tale.

Today's More House School was the Saint Thomas More School from 1939 to 1961 and it was preceded by the Mount Olivet Monastery and School. The building in which the school was located, Moons Hill, was an elegant mansion built at the turn of the century



One of the many faces of
Rex Lynn Linton

by a London-based multi-millionaire, Mr. John Matheson MacDonald, as a country residence. It sadly burnt down in 1972 and only the cloister now remains. The moving spirit behind the Mount Olivet Monastery and associated school was Brother Joseph, a man who was born Reginald Joseph Gardiner, a quotidian name which belied what I can only describe as true genius. He was born in Berkshire on the 9th July 1908, a date later proclaimed as the feast day of St. Thomas More. An only child, sickly, suffering from asthma and bronchial catarrh (he had a 'weak chest'), he was, according to written accounts, strictly brought up by a Christian family.

The family moved north to Yorkshire to a house in the neighbourhood of the Community of the Resurrection at Mirfield where, in the chapel, Reginald acquired his Anglo-Catholic tastes and his love of church ritual.

When 16, Reginald embarked on a stage career which hardly reconciles with the notion that he had a particularly strict upbringing.

He worked with a repertory company in Leeds and took the name Rex Lynn Linton, seemingly after a then popular Victorian novelist. He specialised in variety skills and conjuring and was a gifted character actor. One wonders whether he might not have come from a circus family. He was a small, slight man, with an intense gaze. He early on



grew a beard, perhaps to disguise his extreme youth. He had a weak jaw which he had sometimes to strike with his hand to return it to a closed position. He was romantic and given to the colourful gesture. His affectation of spelling Gard'ner with an apostrophe was symptomatic of this trait. He was industrious, monomaniacal and, at heart, a showman. Photographs show him chameleon-like; in secular clothing, like some rather intellectual accountant, in his monkish robes a more ascetic figure, and in his clown's garbs, a wood-sprite.

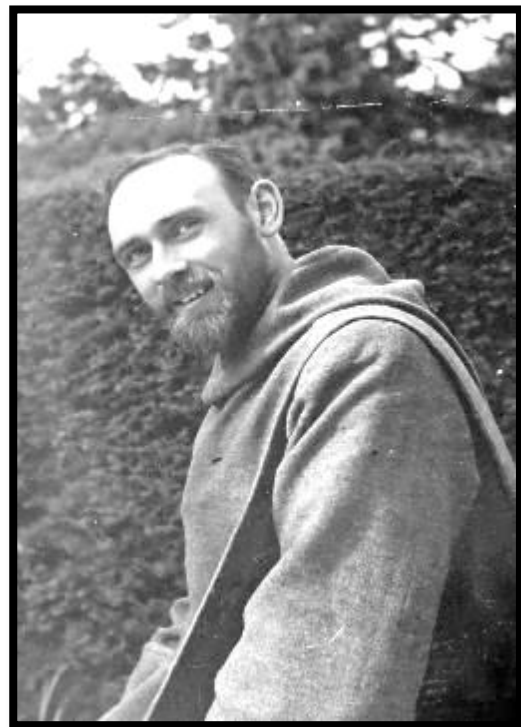
A dedicated Christian, he decided to serve the church. He gave up the stage and, at the age of 20, moved to Staithes, a fishing village on the east coast of Yorkshire, where he was given the oversight of the church of St. Peter the Fisherman a missionary church attached to Staithes Parish. He was surely inspired by the proximity of Whitby, 15 miles to the south-east where, at the crucial Synod of 664 AD, with the guidance of the great Abbess Hilda, the English church adopted the customs of Rome.

This was an extraordinary position for so young a man to occupy, but then Reginald Gard'ner was an extraordinary individual; once encountered, he was never forgotten. His combination of elegance, melodrama and autocratic command constituted true charisma. Staithes was, however, an assignment for which even the charisma of Brother Joseph was likely to prove inadequate. The community, in as much as it was Christian at all, was strongly non-conformist. It was said that there were only three Catholics in the village.

The establishment of The Feast of Christ the King Pope by Pius XI in an encyclical published in 1925, proved crucial in determining the direction Gard'ner would take. The pope was prompted by the worrying growth of nationalism at that time. He wished to remind Christians of their allegiance to the spiritual ruler of heaven (Christ as King) rather than to any temporal political leader. Love of Christ must override love

of nation. The encyclical emphasised that the church's social teaching should form the basis of civil law. This Christ-centred idea appealed to Reginald Gard'ner.

As Reginald pondered his future in the tiny cottage in which he lived, he thought about the pope's new festival and when a clergyman friend from Staithes gave him a gift of a statue of Christ the King, Reginald suddenly saw his mission as setting up a community of laymen dedicated to the service of Christ the King. Thus was The Congregation of the Servants of Christ the King born (the name is usually abbreviated to The Servants of Christ the King). This community of laymen in communion with the Church of England, living under vows of poverty, chastity and obedience, sought to give men the opportunity of living as God would have them live – a life of prayer, adoration and service. It was the first order so dedicated in the world, either Catholic or non-Catholic. Brother Joseph's Benedictine community came under the guidance of the larger and marginally more venerable community of Anglican Benedictines at Nashdom in Buckinghamshire. It was originally located at Pershore in Worcestershire but the house was too small and the community moved to a magnificent house at Nashdom (hence the name). Brother Joseph met members of this community when on a visit to Morton-on-the-Marsh in the spring of 1930; they were visiting their recently vacated house. Shortly thereafter, these Benedictines from Nashdom Abbey offered Brother Joseph their abbey at Pershore, rambling and in poor repair, but at least remote from worldly influence. It looked a better bet than a small cottage in Staithes. Gard'ner therefore moved, on January 1st 1931, and the former leader of the Pershore Benedictines, Dom Martin Collett, who was in time to become the head of Nashdom, joined them as resident priest, Joseph directing the community and Dom Martin being responsible for spiritual development.



They immediately began to take novices. However, the community was never large. The Abbot of Nashdom, who directed the community at Pershore via Dom Martin, believed religious communities should have an active pastoral role. He was not happy with the concept of a contemplative lay community. The Basingstoke Sisters of the Transfiguration had, for some time, cared for mentally defective girls and had hoped for a parallel male community and Brother Joseph, when approached, decided that this work, coming unsought, was God's purpose for his community. He and his community (though Brother Joseph seems rarely to have consulted his colleagues) decided to set up an institution for "mentally defective boys". However, the Pershore property would not meet the requirements laid down by the Board of Control for Residential Institutions and a new home was needed.

The Frensham property was identified, and suggested to Brother Joseph, by the Superior of the Basingstoke Sisters. It was more suitable than Pershore, being commodious and located in spacious grounds. The Servants of Christ the King thereupon negotiated a 21 year lease with the Farnham and District Land Development Company Limited, which by this time owned the property, with Reginald Joseph Gardner (sic) as counterparty, dated 10th August, 1931. The estate was to be known as Mount Olivet Monastery because it was on a hill; Mount Olivet is, of course, the Mount of Olives, from where, according to Acts, Christ ascended to heaven, and where he preached the Sermon on the Mount.

Photographs showing the interior of Mount Olivet shortly after its leasing, reveal a sparsely furnished but most elegant interior. It boasted eighteen bedrooms. The house was certainly well-suited both to a community and an institution. The boys' quarters were located apart from the community and the spacious dormitories and day rooms offered the boys bright and healthy surroundings in which, to quote Brother Joseph, *"they may forget ... the cruel jeers and lack of sympathy with which the mentally afflicted are only too often treated and, as a background for this, there will be the religious life of the community which will teach them to associate the blessings they receive with the holy name of Jesus."*

In April 1931, Gard'ner, now styled Brother Joseph, moved his order to Frensham. One brother travelled ahead of the others to see to the disposition of furniture. On the 14th of August 1931, the other seven monks arrived at Mount Olivet at 3 a.m. in a four seater motorcar that Brother Joseph had obtained, squashed but otherwise well. The Community moved quickly. They appealed to the locals for alms. Several goats were acquired and they began to move towards self-sufficiency. Father Joseph did not pause before advertising his presence. On the 1st October, 1931, an article appeared in the Surrey and Hampshire Chronicle entitled "Servants of the Sanctuary" describing a procession of witnesses through the streets of Farnham in which the new community were given prominence.

Whilst the monastery was now a matter of fact, the institution for educating "mentally defective" boys was not. Brother Joseph planned to open The Mount Olivet Certified Institution in September to house 20 to 30 "high-grade mental defectives" of the age of 16 upwards, but there was much local opposition, as well as considerable support. To many locals the terms "lunatic" and "mentally defective" were conflated. There was fear of physical violence and also fear that local property values would be depressed. Local concern was soon overcome by the tact and engagement in the enterprise of the remarkable William Geoffrey Bouchard de Montmorency, sixth Viscount Mountmorres. He was ordained a priest in 1914 and, at the time of the setting up of Mount Olivet Monastery, was the vicar of St. Mark's, South Farnborough. His distinguished career embraced not only the church, for he was also an explorer and journalist of note. He was an authority on agriculture in Africa and on ethnography.

With the matter of the institution settled, it was time to formally bless the monastery and only a month later, and on the eve of the Feast of Christ the King, the Bishop of Guildford came to bless and dedicate the new monastery. From the outset, then, Mount Olivet was both monastery and educational institution. Although the institution eventually eclipsed the monastery, Father Joseph took the religious duties of the Brothers of Christ The King seriously. He made the monastery a place of pilgrimage for Anglicans. The Surrey and Hampshire News as early as the 15th October carried an article under the headline, "Importance of mental prayer, a quiet afternoon at Mount Olivet Monastery" about what must have been one of its first pilgrimages. The institution opened formally in December 1931. 16 young men were being cared for at the monastery by June 1932. Work on the physical fabric of the school developed apace. Water, rose, rock and shrub gardens were planted or restored. A full complement of 30 boys was in place by January 1933. Boys were sent by 'local mental deficiency committees'. The Institution had received a licence from the Board of Control, and commissioners and inspectors visited regularly. The students underwent a sound vocational training helped by lay instructors in various trades and in self-sufficiency but Brother Joseph found it difficult to engage the interests of the mentally defective boys. Then he had a brilliant, a bizarre idea. Brother Joseph took a step which transformed an already remarkable story into an extraordinary one. He decided to turn his boys into a circus. Literally.

And the story of the circus will be continued in part 2, next month.

Window Cleaning

Whitbread's Window Cleaning is based on the edge of Farnham. We offer a regular, reliable window cleaning service at a competitive price. We also clean gutters, fascias, soffits, cladding and conservatory roofs. We currently service over 300 clients on a regular basis every 4, 6 or 8 weeks in the Farnham area alone. Call us now on 01252 449561 or 07533 682062 for a free, no obligation quote.



Traditional Chinese Medicine

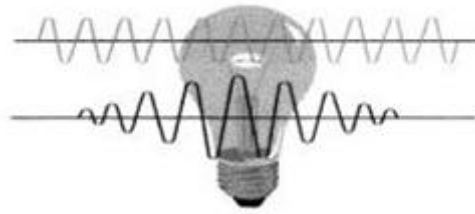


Michael Ng
LicAc., MBACc

Acupuncturist

01252 794353

4 Swiss Close
Boundstone
Farnham
Surrey



PJ Welch

Electrical, Plumbing, Gas

Mobile: 078 765 64 63 0 01252 721251

Pwelch700@gmail.com



PART P

REPLACEMENT BOILERS
CYLINDERS
BOILER REPAIRS, SERVICING, LANDLORD CHECKS
BATHROOMS, KITCHENS, TAPS & SHOWERS
LED LIGHTING, FUSEBOARDS, FAULTS
EXTRA POINTS, CAT6, TV MOUNTING



Do you know anyone who is grieving from bereavement and needs more support or time?

Meeting weekly in Farnham, the group is supported by pastoral assistants and bereavement visitors attached to various Farnham Christian churches, and allows an opportunity for those who are bereaved and lonely to meet others who understand.

Bereavement Café meet every Monday afternoon 3 - 4:30pm for tea and chat at

The Spire Café, Farnham United Reformed Church,

South Street, Farnham, Surrey GU9 7QU

If you would like more details please contact Mary on **07999 368128**
or info@friendstogetherbereavement.org

There are also occasional evening groups for those who need to talk and share about a bereavement. Parents, Spouses, Children, Friends... Do you know anyone who is grieving and would like support?

**Contact Mary on
07999 368128 for
details during
Covid-19**

You are also welcome to bring someone you know who may benefit from the support group, but not want to attend on their own. Accompanying friends are also very welcome.



Farnham Garment Alterations & Tailoring Service

- Ladies & Gents clothing alterations
- Curtains & Soft Furnishings
- Suit / Wedding / Prom & Evening dresses
- One to One fittings by an expert
- Restyling & Repairs
- 1 hr & same day service available
- VIP & Home Visit Service (out of hours)
- Leather & PVC Repair
- Made to Measure Curtains, Upholstery & Garments (Limited options) ask for details

**5 Star express
Gold service at
20% discount**



With over 25 years of experience we can assure you that your garment will be in the best possible hands

01252 444640 www.elitestitch.co.uk
elitestitch12@gmail.com

No appointment required

12 Upper Church Lane, Farnham,
Surrey, GU9 7PW

Always Glazing Works Ltd...

Established 1984
Genuine Local Family Run Business

FREE ESTIMATES. NO JOB TOO BIG OR TOO SMALL

- Table Tops and Safety Glass
- Manufacturers of Lead Lights & Double Glazed Units
- Suppliers & Installers of Pvcu Aluminium Windows & Doors
- Domestic, Commercial, Industrial & Insurance Work Undertaken
- Emergency Shop Front Replacement
- Greenhouse Glass



Unit 6, Farnham Business Centre
Farnham Surrey GU9 7UP
Tel: 01252 727262 Fax: 01252 737779
info@allwaysglazingworks.co.uk
www.allwaysglazingworks.co.uk



FENSA
Registered Company

Alice Holt WI Report - February 2020



President Grada opened the meeting and welcomed everyone including the evening's speaker and three new members.

The speaker for the evening was Carolann Martys who was an actress and had visited Parkhurst Prison on the Isle of Wight over many years and helped prisoners and conducted play readings. Carolann had trained at the Royal Central School of Speech and Drama and became an actress. Later she moved to the Isle of Wight and being lonely decided to join the local WI where she says she learnt to make friends as well as lampshades! She joined the local Am-Dram society and was asked if she would go into Parkhurst Prison to talk to the men about being an actress and from that she offered to go in on a more regular basis to do play readings. Carolann said that this was all fine except when she needed the toilet as the stalls all had stable type doors so if she wanted to use them the prisoners had to be locked up.

The play readings were conducted with small groups of about 12 men who came from various backgrounds and were in prison for many different although all serious cases. One famous person she met was Reggie Kray. Following on from the readings it was decided to put on some plays. When asked if they could do some Shakespeare Carolann decided that *The Merchant of Venice* would be the easiest as it has few female characters and of course she had to play all female rolls. It was interesting that the prisoners were in complete agreement with Shylock as to the repayment of his debt.

Carolann was able to take many actors to visit the prison and entertain the prisoners. Much hilarity had been generated when Daniel Day Lewis read from *Hamlet* and uttered the phrase 'Get thee to a nunnery'.

As well as detailing her visits to the prison Carolann gave many facts and figures concerning the cost to the country of keeping people in prison and told of the benefits of prisoners becoming employed when leaving prison.

Alison thanked Carolann for an informative and at times rather harrowing talk but overall it was amusing and entertaining.

Members were invited to enter a lottery for a course at Denman college by putting £1 in an envelope. This will be drawn at the Annual Council meeting in March.

Members were asked to contribute towards a food hamper that will be raffled at the Spring Fayre in Rowledge on May 25. They were also reminded that the normal WI stall selling jams and preserves really needs a lot of contributions.

Treasurer Lisa reported that finances were healthy but told members that as the annual subscription has to be paid to Surrey Federation at the end of March things were not as good as they seemed.

Christina reported on the Amble and Ramble for February. The Amble was near Chawton house. It was a very cold day but the snowdrops they saw were lovely. The Ramble was near Crooksbury and it was a lovely sunny day with lots of interesting houses and buildings to see.

The flower of the Month was won by Di Jones.

(Editor: Written pre-lockdown)



Following news that schools won't be fully open before the summer, Sarah Oliver sent a message to parents knowing that many will worry about how all of this is impacting on their children.

In that message, she included this post from an American Blogger (slightly adapted). Food for thought.:

WHAT IF INSTEAD OF BEHIND, THESE KIDS ARE AHEAD?

"What if instead of 'behind' this group of kids is advanced because of this?

Let's talk about helping our kids during social distancing.

Hear me out.

What if they have more empathy, they enjoy family connection, they can be more creative and entertain themselves, they love to read, they love to express themselves in writing.

What if they enjoy the simple things, like their own backyard and sitting near a window in the quiet.

What if they notice the birds and the dates the different flowers emerge, and the calming renewal of a gentle rain shower?

What if this generation is the ones to learn to cook, organise their space, do their laundry, and keep a well-run home?

What if they learn to stretch a pound and to live with less? What if they learn to plan shopping trips and meals at home.

What if they learn the value of eating together as a family and finding the good to share in the small delights of the everyday?

What if they are the ones to place great value on our teachers and educational professionals, librarians, public servants and the previously invisible essential support workers like truck drivers, grocers, cashiers, custodians, logistics, and health care workers and their supporting staff, just to name a few of the millions taking care of us right now while we are sheltered in place?

What if among these children, a great leader emerges who had the benefit of a slower pace and a simpler life. What is he or she truly learn what really matters in this life?

What if they are ahead?"

—Jaime Ragsdale

Copyright © 2020 Altogether Mostly, All rights reserved.

HOME COMPUTER SUPPORT & TUITION - " My PC Home Help ! "

Whether a Home or Small Business user. I can Help with your PC Problems !



- Friendly, Professional Support for PC, iMac & iPad ✓
- Computer Health Checks including Virus Removal ✓
- Hardware & Software Maintenance and Upgrades ✓
- Broadband Wired & Wireless Solutions and Setup ✓
- One To One Home Tuition for All Ages & Abilities ✓
- I Supply, Install and Support PCs, iMacs and iPads ✓

Moving to a New Computer ? - I'll transfer absolutely everything for you !

Contact Richard Siers on Bentley (01420) 22844
or e-mail: enquiries@myPChomehelp.co.uk

visit: www.myPChomehelp.co.uk

*The "What's happening in Rowledge...
...and who to contact?" section*

ROWLEDGE VILLAGE EVENTS CALENDAR 2020



VERY IMPORTANT!!!

ALL ROWLEDGE Event Organisers!!!!

Please email the Editor with event dates for 2020, so we can include it in all future issues of the Rowledge Review. Email: rowledgereview@yahoo.co.uk

VILLAGE SPRING CLEAN ...SAT 18th APRIL

Rowledge Activities - Weekly Calendar



Time	Group	Age	Venue
Children's Events			
Mon-Fri			
09.00-15.30	Rowledge Playgroup	2-4	Village Hall
09.00-15.00	Little Fishes Nursery School	2-4	St James Church
Tuesday			
17.00-18.15	Beavers	5-8	Village Hall
18.15-19.30	Cubs	8-10	Village Hall
19.30-21.15	Scouts	10-14	Village Hall
Wednesday			
09.15-11.00	Baby & Toddler Group (term time)	0-4	Village Hall
15.00-19.30	Ballet	3-13	Village Hall
16.45-18.00	Octave children's choir	7+	St James Church
17.00-18.00	Rainbows	5-7	Methodist Hall
18.30-20.00	Guides	10-14	Methodist Hall
19.00-20.30	#hungry (youth group)	11-16	St James Church Hall
Thursday			
18.15-19.45	Brownies	5.30-7	School Hall
Friday			
16.00-18.30	Ballet	13-adult	Village H



Contact details
are in the Village
Directory - in the
centre pages of
the Rowledge
Review.

Adults' Events

Monday			
08.30-09.00	Morning Prayers		St James Church
14.00-16.00	Steady Steps		Village Hall
19.30-21.00	Bruce Yoga		Village Hall
19.30-21.30	Pilates		Village Hall
Tuesday			
09.30-11.30	Ballroom Dancing		Village Hall
09.30-10.30	Zumba Gold (term time only)		Village Club
10.40-11.40	Pilates		Rowledge Club
14.00-17.00	Quilters (fortnightly)		Methodist Hall
19.00-20.00	Pilates		St James Church Hall
19.30-21.15	Community Choir		Fransham Heights School
19.45-22.00	Womens Institute (3 rd T)		The Rowledge Club
20.00-22.30	After 8 ladies group (1 st day)		Homes
Wednesday			
08.30-09.00	Morning Prayers		St James Church
10.30-12.00	Mother's Union		St James Church
14.00-15.00	Nordic Walking		Forest (St James gate)
14.00-16.00	Cameo Singers (2 nd &4 th Wed)		Methodist Hall
15.00-16.00	Healing (1 st Wed)		Methodist Church
19.00-22.15	Bridal Singers		Village Club
19.00-20.00	Prayer Singers		St James Church
19.45-22.30	Prayer Club		Village Hall
Thursday			
09.00-16.00	Teachers		Methodist Hall
10.00-12.00	Art Club		Village Hall
12.30-14.00	Luncheon Club (last Thursday)		Methodist Hall
14.30-15.30	Steady Steps		Village Hall
18.15-19.30	Boot Camp		Village Hall
19.30-22.00	Gardening Club (2 nd Thursday)		Village Hall
18.30-19.15	Bootcamp		
20.30-23.00	Men's Group (3 rd Thursday)		Hare and Hounds
Friday			
08.30-09.00	Morning Prayers		St James Church
09.00-12.00	Coffee Spot		Village Hall
16.00-18.30	Ballet		Village Hall
19.00-20.00	Choir practice		St James' Church
Sunday			
19.45-20.45	Ballroom Dancing		Village Hall

Groups not meeting - check organisers (overleaf) for any online alternatives

ROWLEDGE DIRECTORY – 2020



ST JAMES' CHURCH – Church Lane, Rowledge, GU10 4EN

Vicar	Revd Russ Gant	01252 792402	vicar@stjamesrowledge.org.uk
Churchwarden	Lesley Voice	01252 794579	lesleyvoice@rocketmail.com
Churchwarden	Mike Randall	01252 792007	randallm_e@msn.com
PARISH ADMIN	Hannah Epps	01252 792402	admin@stjamesrowledge.org.uk

Pastoral Assistants

Parish Friends Coordinator	Elaine Andrews	07928 208 590	daveandelaine@hotmail.com
----------------------------	----------------	---------------	---------------------------

Youth Work

Children's Minister	Adele Regan	07791 103 895	Adele.regan@stjamesrowledge.org.uk
Little Fishes Nursery	Judith Parish	01252 794617	littlefishesnursery@gmail.com

Church Officers and Group Leaders

PCC Secretary	Karen Fewster	01252 795169	karenfew@gmail.com
Hon Treasurer	Andrew Fewster	01252 795169	andrew.fewster@gmail.com
Director of Music/Organist	Vacant		
Planned Giving (M'ship)	Mike Randall	01252 792007	randallm_e@msn.com
Planned Giving (Admin)	Mike Haddleton	01252 794851	
Electoral Roll Officer	David Pennington		david@dpcon.eu
Cathedral Link	Colin Honey	01252 794317	
Church Cleaning Team	Maria Doland	01252 793984	
Coffee Rota	Jan Clarke	01252 793661	jan.8@btinternet.com
Bible Reading Notes	Sue Wood	01420 22335	



Rowledge Review

Editor/Creative	Tony Carpenter	01252 793060	rowledgereview@yahoo.co.uk
SEND ARTICLES TO:	Editor	-	rowledgereview@yahoo.co.uk
Advertising	Maggie Blyth	01252 790660	maggie.v.blyth@gmail.com
Distribution	Church Office	01252 792402	admin@stjamesrowledge.org.uk

Church Charities

Children's Society	Vacant		
Christian Aid, Rowledge	Elaine Andrews	07928 208 590	daveandelaine@hotmail.com
USPG	Janet Cunningham-Christie	01428 609290	





METHODIST CHURCH, Chapel Road, Rowledge. GU10 4AP

Minister	Rev'd Philip Simpkins	01420 83167	
Office	-	-	aileen.m.ashby@gmail.com
Church Steward	Aileen Ashby	01252 795438	aileen.m.ashby@gmail.com
Church Steward	Anne Chuter	01252 792685	
Church Steward	Paul Fry	01252 794748	Paul.fry@btinternet.com
Church Steward	Alison Morrice	01252 794471	
Lettings / Hall Bookings	Lynda Godfrey	01252 792479	
Luncheon Club	Aileen Ashby	01252 795438	aileen.m.ashby@gmail.com
Healing Service	Joyce Williamson	01252 793363	jm.williamson@homecall.co.uk

Activities for Children

Little Fishes Nursery School	Judith Parish	01252 794617	littlefishesnursery@gmail.com
Baby & Toddler Group	Miranda Billowes	07977 539 315	rowledge toddlergroup@gmail.com
Rowledge Playgroup Pre-School	April Pegler	07751 366392 or 07806 784035	rowledgeplaygrp@aol.com
Ballet	Maureen Hamilton	01428 656402	maureen@almondndance.com
Playball	Nicola Stubberfield	07919 123008	playballsurrey@gmail.com
Beavers	Rachel Mason	01252 794195	rkmason1904@gmail.com
Cubs	Richard Baines-Walker	07968 587642	richard.banes-walker@struttandparker.com
Scouts	Colette Grist	07879 406 926	colette.grist@yahoo.co.uk
Brownies	-	-	rowledgebrownies@gmail.com
Rainbows and Guides	Rachel Britton	01252 591631	rachel_vasey@yahoo.com
Rowledge After School Club	School Office	01252 792346	
Bootcamp	Olivia Gardner		olivia_g@hotmail.com
Roller skate club	Adam Collis		rowledge@skateclubs.org
Rowledge Football Club	Catherine Greenwood	01252 781785	catherine.greenwood@tribalgroup.com

Schools

Rowledge C of E Primary School Head Teacher	Sarah Oliver	01252 792346	admin@ rowledge.hants.sch.uk
Co-Chair of Governors	Helen Davies		
Co-Chair of Governors	Tom Nixon		
Friends of, Chair	Caroline Eaton	07710 463311	caroline_eaton@me.com
Frensham Heights School	Rick Clarke - Head	01252 792561	admin@frensham-heights.org.uk

Village

Residents' Association	Jeff Ward	01252 795773	wardjeff99@btinternet.com
Village Fayre Chairman	Kelly Taylor	07940 549102 01252 790722	Les_taylors@yahoo.co.uk
Tree Warden	Brian Greig	01252 793762	

Village Hall

Chairman	Richard Baines-Walker	07968587642	
Treasurer	John Phipps		treasurer@rowledgevillagehall.com
Secretary	Karen Fewster	01252 795169	karenfew@gmail.com
Bookings	Susie Duffy		bookings@rowledgevillagehall.com

Police

Surrey	101	Hampshire	101
--------	-----	-----------	-----

Charity Representatives

Cancer Research	Jenny Crawford	01252 793517	
RNLI	Nigel Cuthbert		rnli.farnham@btinternet.com
Save the Children / CHIKS	Robin Radley	01252 794212	robin.radley1@btinternet.com

Social Groups

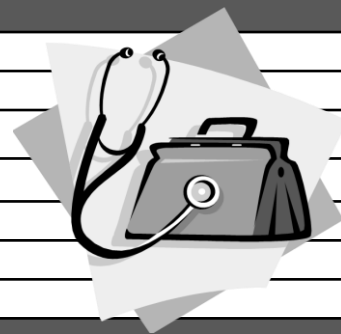
After 8 Group for Women	Sue Gardner	01252 793903	susan@gatec.co.uk
Alice Holt Women's Institute	Grada Helsdon	01252 727824	aliceholtwi20@gmail.com
Art Club	Roger Warburton	01252 793813	rwarburton@btinternet.com
Coffee Spot	Liz Thomas	01252 793802	liz_thomas118@yahoo.co.uk
Community Choir	Edwin Rolles	01420 541966	edwinrolles@hotmail.co.uk
Quilters	Sue Stephens	01252 794375	suestephensuk@btinternet.com
Patchers	Sandra Bigg	01252 792082	sandratbigg@hotmail.com
Farnham Conservatives	Wyatt Ramsdale	07771 674634	Wyatt.Ramsdale@surreycc.gov.uk
Qigong	Julian Jaffe		Julian.jaffe@computer-agents.com

Sports /Activity Groups

Badminton Club	Jeff Kelly	01252 625612	jeffmkelly@virgin.net
Ballroom Dancing	Angela Cobley	07732 556170	angelaschoolofdancing@hotmail.com
Bowling Club Captain	Ken Wickenden	01252 794413	twix.crossroads@talktalk.net
Bowling Club Chairman	Colin Smith	01252 792453	colin.smith747@btinternet.com
Bowling Club Secretary	Sue Stephens	01252 794375	suestephensuk@btinternet.com
Bridge Club			Occasionally in Rowledge Review
Cricket Club Chairman	Carl Baker	07768 325701	carl@carlbaker.co.uk
Cricket Club General Secretary	Lynley Griffiths	01252 710534	lynley.griffiths@talktalk.net
Nordic Walking	Sue Gardner	01252 793903	susan@gate.co.uk
Pilates/Yoga/Zumba	Hannah Epps	07855 291833	hannah@farnhampilates.com
Yoga	Bruce Hawkins		bruceyoga@hotmail.com
Steady Steps	Louise Neave	07875 330440	louise@steadystepsphysio.co.uk
Tennis Club	Kelly Taylor	07940 549102	info@rowledgetennis.org.uk
Rowledge Gardening Club	Roy Gardner	01252 793903	chairman@rowledgegardeningclub.org.uk
Zumba	Alison Edwards	0781 397 6841	ianandalison1@tiscali.co.uk
Hand-bell Ringers	James Morrice	07854 382598	j.morrice@hotmail.com

Welfare

Care Farnham	David Ashby	01252 795438	
Care Farnham	Duty Officer	01252 716655	
Phyllis Tuckwell Support Group	Mandy Main	07904 531337	
Doctors' Surgery	Holly Tree Surgery	01252 793183	
Chiropractor	Anna Maynard	01252 793183	
Surrey Victim Support	[24 hr]	01483 770457	
Hampshire Victim Support	[24 hr]	01252 342777	



Councillors

Surrey County Council	Wyatt Ramsdale	07771 674634	wyatt.ramsdale@surreycc.gov.uk
Hants County Council	Mark Kemp-Gee	01420 563550	marknkempgee@aol.com
E Hants District Council	Ken Carter	01420 22576	Ken.Carter@easthants.gov.uk
Farnham Town Councillor	Paula Dunsmore	01252 710009	Paula.dunsmore@farnham.gov.uk
Binsted Parish Coun. [Clerk]	Sue Hodder	01420 520692	clerk@binstedparishcouncil.org.uk
Binsted Parish Coun. [Dep Clerk]	Karen Ray		depclerk@binstedparishcouncil.org.uk www.binstedparishcouncil.com
Binsted Parish Coun. [Chair]	Ron Neil		r.neil@binstedparishcouncil.org.uk
Binsted Parish Coun. [V.Chair]	Debbie Brooks		d.brooks@binstedparishcouncil.org.uk

I am Liz, the new owner of PetStay Guildford and North Hampshire and I recently made a huge lifestyle change when I swapped my stressful Corporate life working for a large US Company for my own business boarding dogs. I cover the GU post code and have a team of carers with whom the dogs board and my role is to match customers' dogs to the most relevant carer. My perfect day is talking to people about their dogs, meeting the dogs during a board and then getting great feedback after another successful board.

To have a dog in your life is a gift, irrespective of whether you own one, visit one or look after someone else's. There is a lot written

about wellbeing and I believe the presence of a dog greatly adds to this. Endorphins released after walking a dog, bonding hormone Oxytocin released when stroking a dog and the simple touch of fur can lower both your heart rate and blood pressure. Whow!

Then there are all the funny things they do, expressions, noises, mannerisms which make you laugh or just feel immensely happy. They are daily reminders of how awesome the simple things in life are. The half torn ball which is the greatest treasure ever, smelling the spring air knowing the warm weather is on it's way, the sheer joy of running and playing and finally the dreamy, twitchy sleep after yet another perfect doggie day.

Although I no longer own a dog, my life is filled with them and I wouldn't have it any other way. If any of my words resonate enough for you to want a dog back in your life there are so many ways to do this. You could volunteer at a rescue centre, foster dogs who find themselves in poor situations or join my team as a home boarder. Do whatever you can, they really are the tonic for a happier healthier life.



ONLINE Dance-Fitness Classes



ZUMBA®
gold

Tuesdays,
Thursdays and
Fridays 10am



ZUMBA®
fitness

Mondays 8pm
Wednesdays and
Saturdays 10am

£3 per session

Message for details of how to join.

Contact Alison Edwards 0781 397 6841

alizumba835@gmail.com

or ZumbaFun on 

**Alton Pump
Services Ltd**
We'll keep you flowing



**BLOCKED DRAIN?
PUMP PROBLEMS?
TANK NEED EMPTYING?**

24/7 EMERGENCY CALL OUT

CALL: 01420 561661

Checkatrade.com
Where reputation matters

Are you ready for the Septic Tank &
Soakaway regulation changes for 2020?

www.altonpumps.com

**SUPPORT
LOCAL
BUSINESS**

CHIROPODIST / PODIATRIST

@ Holly Tree Doctors' Surgery
Boundstone Road, Rowledge

Yvette Mann
(and Associates)

B.Sc. Pod (hons), M.Ch.S., HCPC
Established since 1997

Treatment for all ages:
routine chiropody, nail surgery,
verrucae, foot and lower limb pain,
insoles/orthotics.

Please ring for an appointment:

01252 793183

www.yvettemannpodiatry.co.uk

Also at Lucks Yard Clinic

Milford: 01483 527945

www.lucksyardclinic.com

**STRUTT
& PARKER**

BNP PARIBAS GROUP

Proper partners

Emma & Will

We don't have clients. Just friends.

If you are thinking
of selling your home
contact us today
struttandparker.com
01252 751623

Men on The Rowledge War Memorial by Neil Pittaway

Harry James Turner lost his father when he was fifteen when they were living in Romsey, Hampshire. His widowed mother took the family to Sherbourne, Dorset where they lived with a dairyman, a role that Harry also took up. His mother's relationship in Sherbourne clearly did not last and Harry, along with his eldest brother and his mother moved to Well, near Crondall where Harry continued as a dairyman on his mother's farm, until he met his wife to be.



Harry James Turner 1882-1917
Private. 3rd Battalion. The Queens
Royal West Surrey Regiment. G/13144
Private. 1st Battalion. Royal West Kent
Regiment (Queens Own). G/14380



Like other names on the Memorial, there is no obvious link between Harry James Turner and Rowledge until marriage bought him to the village in 1911.



Harry was born early in 1882 in Romsey, Hampshire to William James and Mary Turner (née Buckell). He was baptised on 20th January in Romsey, maybe in the wonderful Abbey, on January 20th 1882.

According to the 1891 census record, father William, an engineer was born in Limehouse, Middlesex in 1857 and mother, Mary Buckell, was born in Romsey around 1858. They were married in Camberwell, Surrey on December 3rd 1874 with the marriage record showing their births around 1854.

1874. Marriage solemnized at <i>St. Andrew's Church</i> in the <i>Parish of Camberwell</i> in the County of <i>Surrey</i> .								
No.	When Married.	Name and Surname.	Age.	Condition.	Rank or Profession.	Residence at the time of Marriage.	Partner's Name and Surname.	Rank or Profession of Partner.
192	<i>Dec 3rd 1874</i>	<i>William Turner</i>	<i>21</i>	<i>Bachelor</i>	<i>Engineer</i>	<i>Emm. and.</i>	<i>Maria Ann Turner</i>	<i>Housewife</i>
	<i>1874</i>	<i>Mary Buckell</i>	<i>20</i>	<i>Spinster</i>	<i>-</i>	<i>-</i>	<i>John Buckell</i>	<i>Iron worker.</i>
Married in the <i>Emmanuel Church</i> according to the Rites and Ceremonies of the Established Church, by me, <i>Richard Geo. Baker</i> after <i>Banns</i> by me, <i>William Buckell</i>								
This Marriage was solemnized between us, <i>William Turner</i> and <i>Mary Buckell</i>			In the Presence of us, <i>Richard Geo. Baker</i> and <i>John Buckell</i>					

Harry's parent's marriage
 Camberwell
 1874.

In fact, Harry's father, William was born in 1851, his birth registered in Stepney and was 46 when he died in 1897. There is no suitable birth record for a Mary Buckell in Romsey that matches her post marriage census records. I suspect her name was wrongly entered in the registers as Mary Buckle, born in Romsey 1857 and therefore she was only seventeen or eighteen at the time of her marriage to William.

Harry had three brothers, William, Berthon and Robert and three sisters, Alice, Florence and Ethel.

In 1891 Harry was still living with his parents in his mother's hometown of Romsey

where the family had moved to, from Brixton in south London, before his sister Alice's birth in 1878. His father was 40, not 34.

William J. Turner	Head	M	34	Engineer Stationary	X	Middleton Limbourn
Mary Do	Wife	M	33			Hants Romsey
William D. Do	Son	25	15	Boat Building	X	Lymington, Brixton
Alice C. Do	Daughter		12			Hants Romsey
Harry J. Do	Son		4	Scholar		Do Do
Florence M. Do	Daughter		7	Do		Do Do
Ethel M. Do	Daughter		4	Do		Do Do
Bertha V. Do	Son		11			Do Do

Harry with parents 1891 Romsey, Hants

Harry's father, William father died in Romsey in 1897 and sometime before 1901, widowed mother Mary and her children had moved to Knighton Beer Hackett near Sherbourne in Dorset.

The 1901 census for Knighton shows that Harry, now a dairyman aged 19 was living with his mother and an alleged 'step father' dairyman, twenty nine year old William Jacobs. Harry's mother was certainly not 37 as recorded (likely 44) and 'step father' William Jacobs was 25, not 29. William was bought up by his widowed grandmother in Michelmersh, near Romsey. The census shows that Harry's youngest brother, Robert had been born in Romsey in 1893.

This 1901 census shows Mary as William Jacob's wife and her children as stepchildren of William Jacobs but in fact there is no marriage record for a William Jacobs and Mary.

William Jacobs	Head	M	29	Dairyman	Widower	Hants Michelmarsh
Mary Jacobs	Wife	M	37			Supernumerary
Alice E. Turner	S. Daughter	S	22	Dairymaid	Widower	Hants Romsey
Harry J. Do	S-Son	S	19	Dairyman	Widower	Do Do
Florence M. Do	S-Daughter	S	17	Dairy maid	Widower	Do Do
Ethel M. Do	S-Daughter	S	14	Dairy maid	Widower	Do Woodley
Bertha V. Do	S-Son	S	11	Scholar		Do Romsey
Robert J. Do	S-Son	S	6	Scholar		Do Do

Harry with his mother and stepfather in Sherbourne, Dorset 1901.

By 1911 Harry's 'stepfather', William Jacobs, had departed the scene, destination unknown. Harry had moved with his mother and oldest brother, William, to close to the village of Well (near Odiham, Hants) where they were farmers at Popes Hole. His mother Mary had reverted to her first married name, Mary Turner but still seems to have had difficulty with her correct age, now showing 56 instead of 54. The record shows (crossed out) her seven children were all still living but she states that her marriage had been 30 years before, in 1881 rather than 1874. Clearly her own dates were not Mary's strong point!

Mary Turner	Head	56	Widow	770	Farmer	100	Hants Romsey
William Turner	Son	28	Single		Farmer	110	Hants Romsey
Harry James Turner	Son	27	Single		Dairyman on Farm	110	Hants Romsey

(To be filled up by the Enumerator)

Age	Sex	Mar.	Single	Mar.
2	1	3		

(To be filled up by, or on behalf of, the Head of Family or other person in occupation, or in charge of the dwelling)

I declare that this Schedule is correctly filled up to the best of my knowledge and belief

Signature: Mary Turner

Printed Address: Popes Hole Well Michelmarsh

Harry James Turner as a dairyman with his mother and brother at Popes Hole, Well near Crondall.

Six months after this 1911 census, Harry married a young widow, Millie Andrews (née Barnett). Millie’s first marriage to railway platelayer, Arthur Charles Andrews, was at St. James in 1907 and the record showed her living in Rowledge.

1907. Marriage solemnized at <i>St James Church</i> in the <i>Parrish</i> of <i>Rowledge</i> in the County of <i>Southampton</i>								
No.	Wives/Married	Name and Surname	Age	Condition	Rank or Profession	Residence at the time of Marriage	Father's Name and Surname	Rank or Profession of Father
202	March 30 th 1907	Arthur Charles Andrews	25	Bachelor	Platelayer	Longlington Rowledge	Arthur Andrews	Carter
		Millie Barnett	23	Spinster	—	Rowledge	Ezekiel Barnett	Labourer
Married in the <i>Parish Church</i> according to the Rites and Ceremonies of the Established Church by <i>Arthur A. Parker, Vicar</i> as after <i>Banns</i> by <i>1907</i>								
This Marriage was solemnized between us			in the presence of us					
<i>Arthur Charles Andrews</i>			<i>Millie Barnett</i>			<i>Arthur A. Parker, Vicar</i>		

Millie Andrews (née Barnett) first marriage at St James Rowledge March 1907

Millie and Arthur Andrews had one daughter, Beatrice, born in Bentley on 10th March 1908. Arthur sadly died a few weeks after Beatrice’s birth.

Millie Barnett was born in Binsted on the 9th October 1884 and was the only surviving daughter of farm stockman, Ezekiel and Eliza Barnett, both also born in Binsted around 1850. The 1901 census for Groveland Cottages in the area between Bentley Mill and Holt Pound shows Millie, aged 16, as a Domestic, General.

Groveland Cottages 1		Ezekiel Barnett	Head	M	52	Stockman & Farm	Wife	Eliza Barnett
		Eliza	"	Wife	M			"
		Millie	"	Daughter	16	Domestic general		"

Millie with her parents, Groveland Cottages, Holt Pound 1901

Three years after her first husband died in 1908, the 1911 census shows that Millie was working in Crondall as a housekeeper for widower, John French, a Methodist Minister born in Cornwall. He had moved to Crondall via Wales and Yorkshire where his five year old son was born.

John French	Head	35	Widow	-	1	United Methodist Minister	23	Widower Cornwall
Wilfrid John French	Son	5						Brother, Yorkshire
Millie Andrews	Housekeeper	27	Widow	-	1			Binsted Hants
Beatrice 3 rd Adams	Daughter	3						

Millie Andrews (widow) with her young daughter, Beatrice working in Crondall in 1911.

John French apparently did not remarry and died in Staffordshire in 1934. His son Wilfrid John French became a journalist.

Popes Hole, north east of Well where Harry Turner was living with his mother, and the village of Crondall, where Millie Andrews was working for John French as a housekeeper, are thirty minutes walk apart at either end of the Well Road, so it is possible that Harry met Millie in Crondall, maybe at the village stores.

Harry James Turner and Millie Andrews (née Barnett) married at St James Rowledge on September 28th 1911, both by then showing Rowledge as their residence. Harry’s youngest brother, Robert was a witness.

1911. Marriage solemnized at St James Church, in the Parish of Rowledge, in the County of Southampton

No.	When Married.	Name and Surname.	Age.	Condition.	Rank or Profession.	Residence at the time of Marriage.	Father's Name and Residence.	Rank or Profession of Father.
236	September 28 th 1911.	Harry James Turner	30	Bachelor	Quartermaster	Rowledge	William Turner	Engineer
		Millie Andrews	28	Widow		Rowledge	Ezekiel Barnett	Labourer

Married in the Parish Church according to the Rites and Ceremonies of the Established Church, by Arthur W. Parker Minister of the Gospel, by me, Arthur W. Parker Vicar.

This Marriage was solemnized between us, Harry James Turner and Millie Andrews in the presence of Robert John Turner and Ezekiel George.

Marriage of Harry James Turner to Millie Andrews, St James, September 1911.

In addition to Beatrice, Millie's daughter by her first marriage, Harry and Millie had two children of their own. Christabel Mary Turner was born in Rowledge on July 15th 1914 and Robert Barnett Turner was born in Farnham (possibly Rowledge) on September 18th 1916. This was a few weeks after his father had left to fight in France.

The military record for Harry James Turner suffered only limited damage in the 1940 fire but even so, much of it is illegible. It appears that he enlisted at Farnham on 30th November 1915, joining the 3rd Battalion of the Royal West Surrey Regiment (The Queens) and remained with them in the UK until he transferred to the 1st Battalion of the Royal West Kent Regiment (Queens Own) in March 1916.

At the time of his enlistment Harry gave his role as a gardener and his address as Rosedale, Rowledge. (Long Road).

Name Harry James Turner

Apparent age 34 years — months. Height 5 feet — inches.

Chest Measurement { Girth when fully expanded 38 inches.
Range of expansion 2 inches.

Distinctive marks Vaccination 4 Left 6 of 8 Cap & Co
Fresh Brown & Brown

INFORMATION SUPPLIED BY RECRUIT.

Name and Address of next-of-kin "Millie" Rosedale, Rowledge
nr Farnham Surrey Relationship Wife

Particulars as to Marriage.

(a) Christian and Surname of Woman to whom married, and whether spinster or widow. (b) Place and date of marriage.
(c) Present address. (d) Initials of Officer verifying entry.

Millie Andrews Widow	St James Church Rowledge	Rosedale Rowledge nr Farnham Surrey	28 th Sept. 1911
-------------------------	-----------------------------	---	-----------------------------

Particulars as to Children.

Christian Names	Date and Place of Birth
Beatrice Elizabeth	10 th March 1905 Bently
Christabel Mary	15 th July 1914 Rowledge
Robert Barnett	18. 9. 1916 Farnham Surrey

Enlistment record for Harry James Turner, November 1915

Harry's son, Robert Barnett would have been added to this enlistment army record after his birth in 1916.

Harry's record is not legible enough to show the date he sailed for France but from vaccination records it looks to have been in July or August 1916.

A contemporary Parish Magazine record indicates that Harry Turner was back in England and under training when he was taken ill in April 1917. He was taken to the Fort Pitt Military Hospital in Chatham, Kent.

Although difficult to read, this Fort Pitt record shows Harry arrived at the hospital on April 24th. He had been in hospital for seven days before he suddenly died on April 30th 1917. He was thirty five, married with a wife, now widowed for a second, time and three young children.

Name of Hospital	Admitted to Hospital			Discharged from Hospital			Disease	Number of days in Hospital	Remarks bearing on the cause, nature, use. In cases of syphilis, a subsequent progress, including be given in the special syph
	Day	Month	Year	Day	Month	Year			
Fort Pitt Military Hospital Chatham	24	4	17	30	4	17	Chronic Nephritis & Aortic Valve Failure	7	Chronic Nephritis & Aortic Valve Failure

The hospital and death record for Harry James Turner, April 1917

The cause of death was Chronic Nephritis and Aortic Valvular Failure. (A kidney infection and heart valve failure). Harry James Turner was brought back to Rowledge where he was buried at St. James on May 4th 1917. His burial record shows that the family were still living in Rowledge.

Harry James Turner	Rowledge	May 4 1917	36 years	H. J. Harte
No. 488	116	1917		

Burial record for Harry James Turner. St James May 4th 1917

Harry’s St. James’ memorial headstone, set up by the Commonwealth War Graves Commission, is still clearly visible.

Probate for Harry shows that he left her £69. (Approx. £4,500 today).

TURNER Harry James of Rowledge **Surrey** private Royal West Kent regiment died 30 April 1917 at Fort Pitt Military Hospital Chatham Administration **London** 13 July to Millie Turner widow. Effects £69.

The electoral register for 1918 shows Millie was still at Rosedale in Rowledge. Harry’s army pension record and the electoral roll for 1920 show that by then Millie had move to Heath Lane in Ewshot. In 1923 she returned to Crondall to live in Tern Cottage, Pankridge Street where she was living until at least 1930. The 1939 register shows her working as a domestic servant in Hartley Witney.



Millie Turner did not marry for a third time and died (registered in south west Surrey) in the summer of 1970, aged 85. Her father had died in 1931 and her mother in 1936.

SIR,

I am directed by the Minister of Pensions to inform you that the widow of No. 14380 Pte H. J. Turner
3rd Royal West Kent Rgt

has been awarded a Pension of 26/3 a week, for herself and three children, with effect from the 12-11-17.

Harry's brother, Robert John Turner who had witnessed Harry and Millie's marriage, was a Corporal with the 1st Battalion, Hampshire Regiment. He fell on July 1st, 1916, the opening day of the first battle of the Somme. He was twenty four and was not recovered. His name is on the Thiepval Memorial within sight of the grave of my own uncle who fell on the same day. Robert's death was possibly just before Harry had left for France and would possibly have been known to both Harry and Millie. Their brother, Berthon, who had married in 1911, fought with the Kings Royal Rifle Corps and survived the war.

Harry's mother, Mary Turner, died in 1922 with the death registered in Basingstoke and a birth date given as 1857, for once seemingly correct!

4 FOUR SEASONS MARQUEES

BEAUTIFUL MARQUEES FOR EVERY OCCASION



For more information
Call

01420 488477

www.FourSeasonsMarquees.co.uk

Jane Stockdale

HOME COOKING

- for all occasions

Dinners, Luncheons, Buffets,
After Service gatherings,
Tea parties, Children's parties,
cooking for the freezer,
individual dishes.



SPECIALISING
in
**CAKES &
CANAPES**

Please call

01252 723 161 or 077 75 69 69 18

HANNON GARDEN CARE

- General Garden Maintenance
- Hedges Cutting and Removal
- Small Tree Work; Including Removal
- Fence and Shed Preservative Treatment
- PA1 & Pa6a Chemical Spraying Licence
- Much More on Request

All Jobs Considered with a Free Quotation

For a Professional, Friendly and Reliable Service Please Contact;

Tom: 07923 138 208

Email: hannongardencare@hotmail.com

References on Request



The Zoo!

**Come and join us for our exciting
new after school club for children in
Key Stage 1.**

Mondays in Term Time, 5-6pm!

**We play games, do craft, hear stories
and someone, every week, will get to
take home our club mascot**

'Lional Roary'!



**For more information, chat to Adele Regan, St James' Church Kids' Worker
adele.regan@stjamesrowledge.org.uk**

Extra Care Retirement Community

Land north of Fullers Rd, Holt Pound



We are not sure how many local residents are aware of the proposal of a Care Retirement Community on the land north of Fullers Road in Rowledge, with access to the site between Barnacre and The Ford.

The proposal is for the development of:

- 9 no. x 1 bedroom apartments
- 85 no x 2 bedroom apartments
- 15 no. x 3 bedroom apartments
- 8 no. x 2 bedroom cottages
- 4 no. x 3 bedroom cottages

6000sq.ft/ 560sq m of communal facilities to include:

- a. Cafe/market hall
- b. Restaurant
- c. Private dining
- d. Lounge
- e. Hair salon
- f. Library
- g. Break out space
- h. Welcome desk
- i. Care and admin offices
- j. Mobility buggy store.

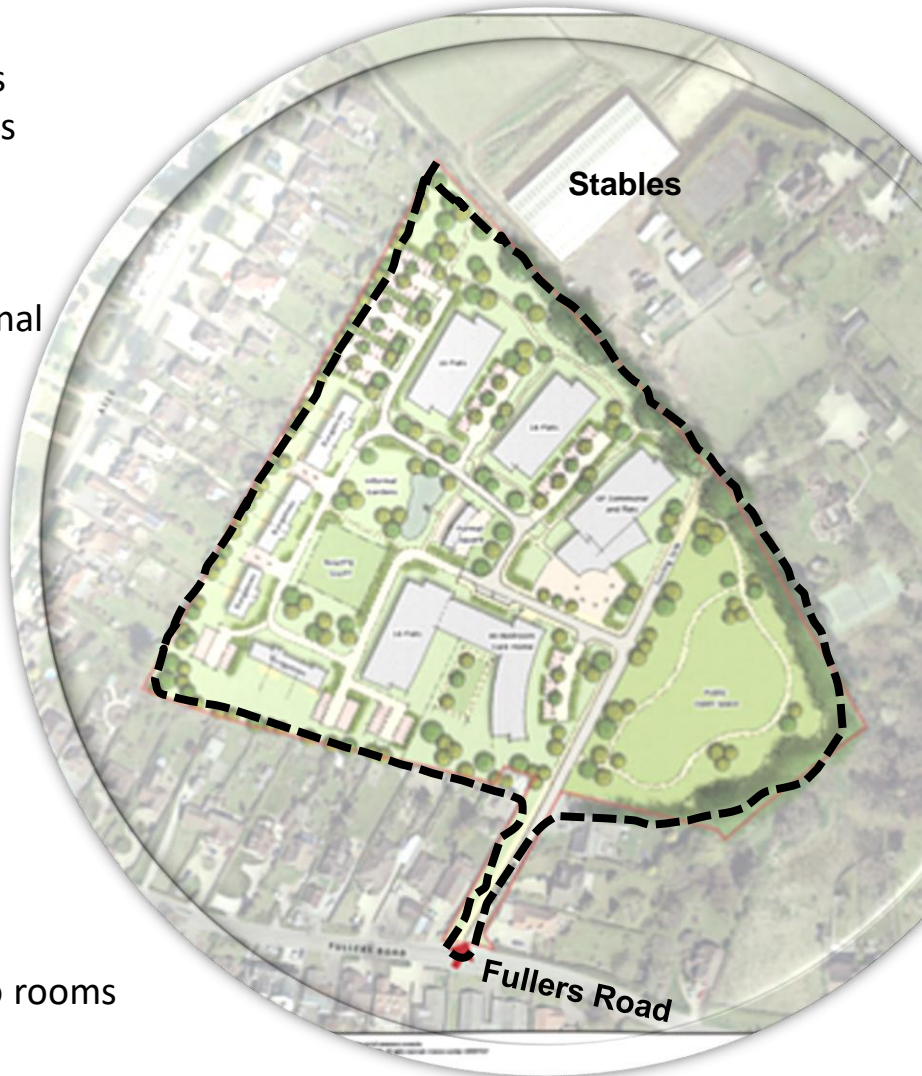
6000sq ft/560 sq m

- a. Spa plus treatment/physio rooms
- b. Gym
- c. Activity room
- d. Pool
- e. Cafe/juice bar & terrace

It would be most helpful to Binsted Parish Council if the residents of Rowledge could let us have their thoughts on the above proposal

Comments to:
Clerk Binsted Parish Council
clerk@binstedparishcouncil.org.uk
07483 310 631

Proposed development



Access between Barnacre and The Ford



Details of Developer can be found here:
www.falcondevelopments.co.uk/holtpound

Rowledge War Memorial – A setting to respect the Memorial

It is 100 years since the Rowledge War Memorial was erected after the Great War to be proudly visible at the intersection of the Binsted, Farnham and Frensham parish boundaries.



In 1997, the Memorial was struck by a lorry and, with financial support from Binsted Parish Council, Hampshire County Council moved it to the side of the road, next to the hedge.



More than twenty years later, the Memorial site looks a little neglected, tired and often unkempt.

Apart from a salt silo and a bent 'Give Way' sign, the grass is in an extremely poor state. It was laid directly over the original tarmac and varies between a muddy track and being dried out and virtually grass-less.



The effects of dry weather on untended grass.



There is now an opportunity for a major element of the original Memorial site to be sensitively and thoughtfully restored. An appropriate base would enhance the Memorial and, at the same time, would help to give the impression of a free-standing monument, rather than one sitting on grassy waste land, pushed hard against the hedge. The site also needs to be as maintenance free as possible. This suggests that the grass should be replaced with a suitable surface that not only copes with the underlying tarmac, but also withstands both the elements and the increasing pedestrian traffic.

THE PROPOSAL

A carefully constructed York stone base would fulfil all the required criteria; enhancing the area both visually and practically but, most important of all, provide a setting that respects our War Memorial.

What do you think?

Over the next 4 weeks, we're carrying out a public consultation to establish what local residents think of the proposal outlined in this proposal.

Binsted Parish Council and Hampshire CC need to know that local residents support such a solution before commissioning any change.

We'd love to hear from you before we proceed any further with design development.



Please submit your comments and feedback by the end of July.

Send by email to

mark.westcott@btconnect.com

or by post to:

Mark Westcott

2a School Road,

Rowledge GU10 4BW

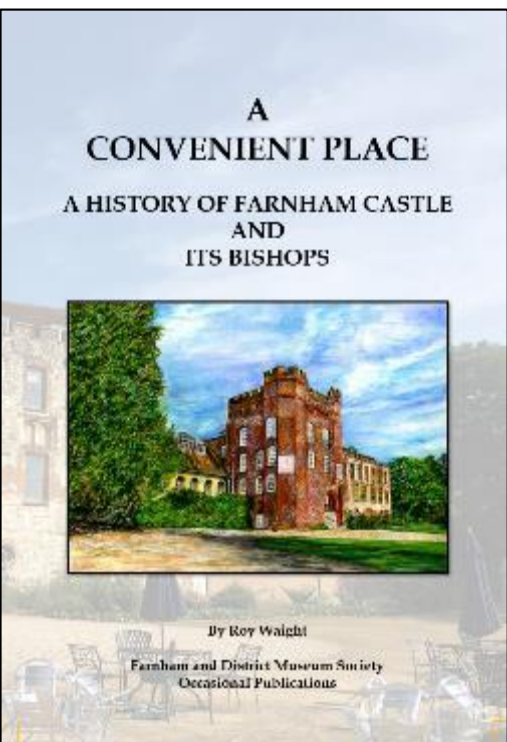
Proposal prepared by Neil Pittaway and Mark Westcott 06.06.20

What have you been doing in lockdown?

ROY WAIGHT . It's an ill wind that blows nobody any good, I suppose. In my own case, I've found the time during this enforced quarantine, to finish and get published two books, both available to anyone who wants one (or both...)

First, the Farnham and District Museum Society has published my '*A Convenient Place – A History of Farnham Castle and its Bishops*'. Unfortunately, we've had to do this without a book launch, but we've sold 70 copies already by hearsay, which isn't too bad. The Second is '*By a Forest, the History of the Ecclesiastical Parish of Rowledge*', of which more later.

What can you say about Farnham Castle and its bishops? Well, rather a lot I found out. Farnham Castle remains one of the, perhaps **the**, finest surviving episcopal palace in England, though it hasn't been the home of a bishop since 1955, when the Rt. Revd. Montgomery-Campbell upped sticks from his role as Bishop of Guildford and went to be Bishop of London. He was, I think, the wittiest of the bishops who occupied the Castle,



or at least of those whose witticisms have come down to us. On arriving at St. Paul's Cathedral and seeking entry to his see by knocking on the door with his crozier (part of an ancient tradition) he was kept waiting. Then the great doors opened to reveal all the elderly canons of St. Pauls. Most were over 70, many much older. Montgomery-Campbell looked at them with surprise and then said to the clustering news reporters: "Ah, the See gives up its dead!"

The Castle itself was only one of many residences and palaces 'owned' by the bishops of Winchester though, being a convenient stopping off point between London and Winchester, it was frequently used. I would guess that mediaeval bishops of Winchester spent about 5% of their time there. During that period, and ending with Henry VIII and the Reformation, the bishops were

not only mighty prelates, but major figures in secular life. Chancellors (a bit like the prime minister), Treasurers (chancellors of the exchequer), members of the privy council... Several of them were warriors (though they were not supposed to shed blood themselves); all of them were rich beyond the dreams of avarice. They enjoyed the revenues of some 60 manors across south east England of which Farnham manor was only one.

After the Reformation, their secular importance evaporated very quickly, as did their wealth, rather more slowly, under the impact of inflation. Then in the nineteenth century, the Ecclesiastical Commission was created, all the bishops' properties gradually taken under central ownership by the Church of England, and the bishops were reduced to living on a stipend. Bishop Charles Sumner, Bishop of Winchester in the Victorian age,

and a thoroughly good egg, was ‘the last of the prince-bishops’. Of course, they could no longer afford to live in somewhere as expensive as Farnham Castle. So when the bishop of Guildford moved in in 1927 (Winchester having been just broken up) he did so to only the eastern half of the Castle. The western part became a retreat house. This, too, proved too expensive. When Montgomery-Campbell left in 1955, people scarce knew what to do with the place. Fortunately, it became home to the Centre for International Briefing for some 50 years and, more recently, has become an expensive but rather glorious wedding venue. It is in fine fettle.

In the Second World War, while the bishop occupied his eastern wedge of palace, the western wedge was given over to the secret Camouflage Development and Training Centre, and Farnham Castle made its most extraordinary contribution to English history. At no time in its history had the Castle been home to such a galaxy of talent as then.

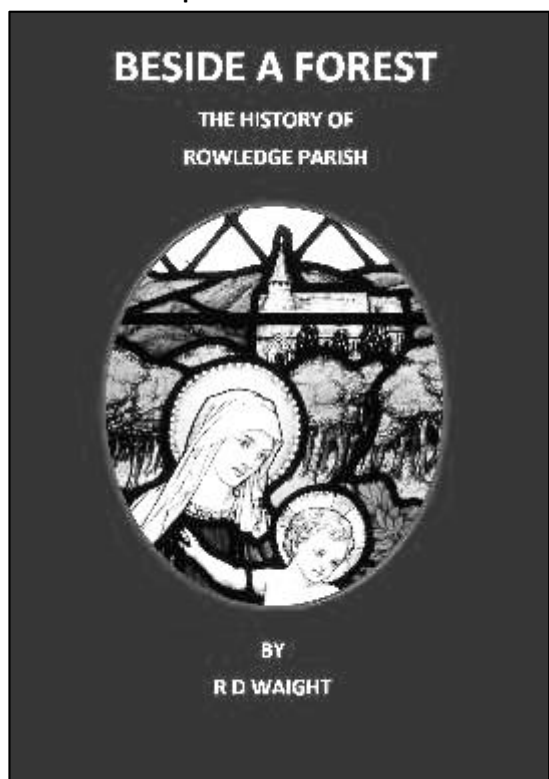
Last year I gave a couple of talks about the bishops of Winchester who ‘owned’ the Castle and used it as a residence from its construction (traditionally dated to 1138 ... actually earlier) until 1927, when the new Diocese of Guildford took over. After one of them, I was approached and asked whether I would be willing to give an after-dinner address at the next Venison Supper. Whether that will happen this year only time will tell. But it got me thinking about what theme I might adopt and I thought ‘a Guinness Book of Records of the Bishops of Winchester’ might be a theme.

My favourite bishop of Winchester? William of Wykeham, the great builder of New College Oxford and Winchester College, and a bishop who appalled his contemporary bishops by insisting on lunching with his masons and carpenters. I like that. He was chancellor of England. How many prime ministers choose to eat with the *hoi polloi*? The most warlike? Pierre des Roches, King John’s right-hand man, who helped take Jerusalem during the Crusades, and helped Henry III kick out the French in 1217 (they had invaded England the year before). His heart was buried at Waverley and last caught sight of in the hands of a solicitor in Guildford. It has since disappeared. The most illustrious? Henry of Blois, who built the castle, and was the king’s younger brother. The most corrupt? Bishop Brownlow North who was bishop for 40 years straddling the eighteenth and nineteenth centuries and whose nepotism shocked even the Georgians and gave Trollope the plot for his novel ‘*The Warden*’. The most fortunate? Bishop Pretymen who woke up one day to discover that a man he hardly knew, Marmaduke Tomline, had left him a vast fortune on the understanding that he took the name Pretymen-Tomline. (Pretymen-Tomline was the bishop who followed Brownlow North, was a mathematical prodigy and created our modern treasury management system for William Pitt the Younger – bishops were remarkable men in those days).

Least lucky? Maybe Bishop Langton, who was made Archbishop of Canterbury but died horribly of the plague on his way to Canterbury. Nicest? Well, George Morley, who rebuilt the Castle in the late seventeenth century after Cromwell has blown it up, is a contender, though all the 20th century bishops seem to have been pleasant.

Nastiest? Aymer de Valence, murderer and monster who precipitated the Second Barons' War in the thirteenth century. Read all about him! Holiest? Bishop Lancelot Andrewes whose sermons are so rich and beautifully expressed that they converted T S Eliot to the Church of England. Least holy? Well there, there is a lot of competition. Aymer de Valence must be one contender. Bishop Henry Beaufort, bastard son of John of Gaunt, who reputedly had Joan of Arc burnt at the stake, might be another. They were a remarkable bunch the bishops, but they were courageous. I might mention, if I may, that during the Black Death, when half the population of Farnham died in 18 months, and during the dozens of deadly pandemics that followed, the diocese of Winchester never closed its churches to those seeking comfort therein. You can read all about it in my book!

Second, as some of you may know, I have spent years researching the history of the Ecclesiastical parish of Rowledge since it was created in 1871. I wanted to complete a 'definitive' history in time to celebrate the 150th anniversary of the founding of the parish and the consecration of the church of St. James. Sadly, the enforced quarantine (I hate the word 'lockdown' which is what Americans do to rioting prisoners) has thrown a spanner in the works.



Nevertheless, I have 100 copies of the book. Unfortunately, when the copies came back, some of the images were rather faded, but the text, at any rate, is OK. You will find that the vicars of Rowledge do not seem to have been quite as colourful as the bishops of Winchester (and they have been slightly less well remunerated!) But they have included some impressive men. My favourite? The Revd. Robert Winnett, who encouraged Mary Parratt to go to college, and who wrote the definitive Anglican statement on remarriage in church. Actually he wrote it twice. The first time he was against it. The second time he was for it. What could be more Anglican than that?

The Farnham Castle book will be sold by Waterstones when (and if) they reopen.

I imagine they will retail it at £16.99 (it's their decision). For any readers of the Rowledge Review who are interested, they may obtain a copy from me at £10 a copy or £13.50 including postage. This is simply at cost. My email address is rwaight@btinternet.com. The Rowledge book I intend to sell to parish members who are interested. All sales proceeds will go to St. James' Church. £10 a copy, again at cost.

So that's what I've spent my time doing.

Oh, and queuing outside Waitrose.



Abbeyfield Wey Valley Society



Care homes with a difference
providing Residential & Nursing care in Farnham

- * Fees reflect charitable status
- * Locally sourced home cooked food
- * All rooms are spacious with en-suite facilities
- * Wide range of activities
- * Large input from Volunteers
- * Weekly summer outings
- * Pleasant gardens in every home

All homes provide a real ‘home from home’

Please contact us on 01252 712021 or 899000

Email: admin@abbeyfieldweyvalley.co.uk

www.abbeyfieldweyvalley.co.uk



**Rowledge
Pre-School**



**“Enriching young minds, a guide for curious learners,
A big hand for a little hand”**



Your local village pre-school for children aged 2-5 years

15 hours and 30 hours funding available

AM, PM and full day sessions available

For further information or to arrange a visit
contact us

Tel No: 07751 366392

Website: www.rowledgepreschool.co.uk

“Just wonderful”

Real words from really happy residents, during lockdown.



Our villages are filled with people who, more than ever, truly appreciate *the power of community*, in later life.

Is now the right time to move to an Inspired village?

**BRAMSHOTT
— PLACE —**

Inspired in Hampshire

Come and look around safely, call **01428 787 458**, or visit inspiredvillages.co.uk/TimeToMove



Tree Surgery Hedges Stump Grinding



- Local Authority Approved
- Fully Insured
- NPTC Qualified Staff
- Free Quotations
- Domestic & Commercial Contracts

Farnham 01252 782252 Guildford 01483 425266 Alton 01420 525292
24 Hour Emergency Call Out www.1stcalltrees.com info@1stcalltrees.com

Farnham Food Bank

At this difficult time, please do support your local Foodbank.

Donations can be made at St. James' Church, Rowledge Co-Op, Waitrose or at the Vineyard Centre, Church House, Union Road, Farnham, Surrey, GU9 7PT

There is a huge increase in need at the moment, especially from those families who would usually be reliant on school dinners.

To access the foodbank should you be in need, please see contact details below.

PHONE - 079015 81539

WEBSITE - <https://farnham.foodbank.org.uk>

EMAIL - info@farnham.foodbank.org.uk

You can also contact St. James' Church Office to collect Foodbank vouchers.

The Church Office,
Church Lane,
Rowledge,
GU10 4EN.

PHONE - 01252 792402

EMAIL - admin@stjamesrowledge.org.uk

The Foodbank would also be very grateful for any financial contributions you feel moved to make.

If you have any queries, do contact:

Anne Blackman (01252 793344)

THANK YOU!

"The foodbank was there when we really needed it, it was an absolute lifeline."

- Tinned potatoes
- Tinned tomatoes
- UHT cow's milk
- Long life fruit juice
- Instant mash
- Instant noodles
- Chocolate bars
- Tinned sponge pudding
- Tinned rice pudding

NEW Foodbank Vouchers

St James' Church is now able to issue foodbank vouchers for those in need. To be eligible for an emergency food parcel as an individual or a family, you will need to be referred with a voucher from the church office.

Your referral will be completely confidential. If you or someone you know is in need then please contact the church office on 01252 792 402.





Diocese of Guildford



Hearing Champions

A Guildford Diocese initiative, in partnership with the
NHS and St James' Church, Rowledge



St. James' Church
Rowledge

A FREE service for people with
NHS hearing aids includes:

Basic maintenance
Battery supply
Cleaning & re-tubing
Trouble-shooting
&
Advice

FaithAction

**Faith & Health
Award 2018**

Winner

All our volunteers have been trained by the audiology departments of Epsom & St Helier Hospital or the Royal Surrey County Hospital and hold training completion certificates.

**Sessions at the Village Hall Coffee Spot currently
suspended.**

Appliance Repair

Electric Cooker/Hob
Tumble dryer
Dishwasher
Washing machine
Fridge/Freezer*

- Built in and free standing
- New appliances with installation
- Members of **Checkatrade.com**
Where reputation matters

Appliance Expert

*Built in & American style only

Domestic Appliance repair

Elstead (01252) 705198

www.applianceexpert.co.uk

Calling All Villagers

Our school needs new Governors.



School Governors make a valuable contribution to children's education, opportunities and futures. Being a school governor is a hugely rewarding but challenging role. It will give you the chance to make a real difference to young people and to your local community. You will also be joining the largest volunteer force in the country: there are over a quarter of a million volunteers governing state funded schools in England. The poster shows that the children are keen to have you join as well!

If you are interested, please contact Helen Davies on helenmdavies@gmail.com

PRISM WINDOW CLEANING

Prompt and friendly local service.
 Proprietor Dean Atkins.
www.prismwindowcleaningltd.com
 Regular Service, Fully Insured
Tel: 07768 986338



We have dry cleaned carpets & upholstery in 100's of homes

Imagine Dry Carpet Cleaning

"no soggy carpets or wet dog smell in your home"

- Spills & spots - gone
- Smells & odours - removed
- Deep cleans & lifts carpet pile - like new

FREE spot & stain remover with every clean

I also clean:

Upholstery, Hard & Wooden Floors

Locally based family run business,

Call us for FREE on

0800 180 4046

**Get Main Room Cleaned
save 50%
on all further rooms
+ Free Stain Guard**

zero dry time

Dry Carpet, Upholstery & Hard Floor Cleaners

DAVE FITCHETT

**GARDENING
DECORATING
FENCING, PATIOS and more**
01252723389

07754775844



Have you ever considered Live-in Care as an alternative to residential care?



Live-in Care is when a professional and trained Carer lives with you in your home supporting you with your day-to-day needs. For many, having a Live-in Carer enables you to maintain your hobbies, interests and social life.

Tel **01428 690007** Email **enquiries@liveincare.ltd.uk**

**LIVE  IN
CARE LTD**

24/7 PEACE OF MIND

www.liveincare.ltd.uk

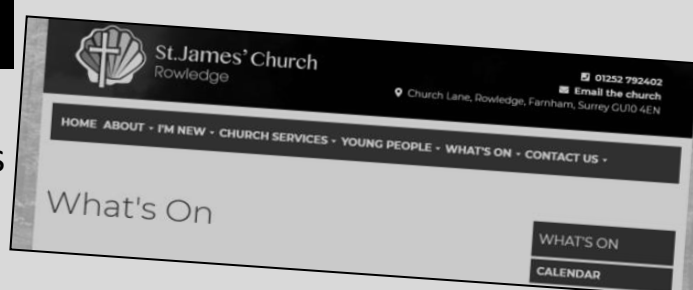
Church Website –Take a look! Updated regularly

www.stjamesrowledge.org.uk

Take a look at our website.

Full of interesting information and details of everything going on at St James'.

We'd love to hear your comments.



BED AND BREAKFAST

IN AID OF CHIKS CHARITY



(for orphaned children in Southern India, run by a village resident)

On the edge of Rowledge Village, a double en-suite ground floor room is available with plenty of off road parking.

Full English breakfast and a warm welcome.

01420 22292 annfoster222@gmail.com



WEST END FLOWER FARM
— Farming in Froyle since 1920 —

The flower farm is open for walks around the farm, see the rose field and wander the lake; well behaved dogs are welcomed too. In addition the farm has a B&B and self-catered cottage so please do bear us in mind for visiting families and friends.

West End Flower Farm Shop and Kitchen in Upper Froyle, just outside Alton is now open to the public from Wednesday – Sunday.

The kitchen serves brunch, lunch and afternoon tea using local produce and delicious cakes. The farm shop has fresh flowers, gardening items and local artisan products too.

Please do come and visit us **www.westendflowerfarm.co.uk**

2 mornings a year volunteer! - Village Tidy-Up

Having coordinated the Village Tidy-Up twice a year, for many years on behalf of the Residents Association, Phil Thomas would like to hand over the reins to someone else.

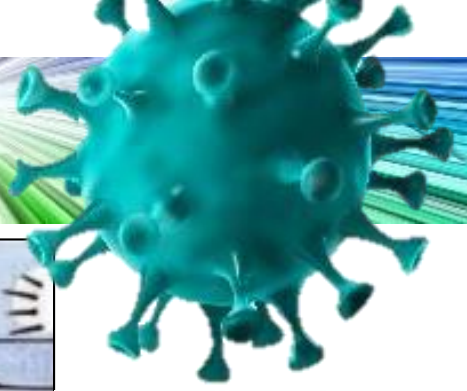
If you want to help keep the village looking spic and span, please speak with Phil or Jeff Ward who will explain what is involved in this important and highly valued role.



philthomas36@btinternet.com

wardjeff99@btinternet.com

Fun time



Why did the chicken cross the road?
Because we all do!

Every disaster movie starts with the Government ignoring a scientist!



Thoughts and prayers going out to all the married men who've spent months telling their wives "I'll do that when I have time."



	4		2		1		6
9		5				3	7
5		7		8		1	4
	1						9
		1				6	
			7		5		
6		8	9		4	5	3

My dog walking himself since he can't get Coronavirus!



Sudoku Each puzzle has a solution that can be reached logically without guessing. Enter digits from 1 to 9 into the blank spaces. Every row must contain one of each digit. So must every column, as must every 9 space shape.

Nigel Gaymer

Interior & Exterior Decorating

For a free estimate with full references
please contact Nigel on:

07951 558443

01252 711260

nigelgaymer@btinternet.com

WRECCLESHAM TENNIS CLUB

Small enough to be mega friendly
Large enough to offer some great tennis.

4 Hard Asphalt Courts (3 floodlit)

New clubhouse

Coaching available

LTA Tennismark Accredited

Men's, Mixed & Ladies' teams

Social tournaments & events

Members' Wimbledon Draw Ballot

Great value membership costs

Find us at Riverdale, Wrecclesham, GU10 4PJ (the other side of the A325)

www.wreccleshamtennis.org.uk or

email: membership@wreccleshamtennis.org.uk



EDITORIAL

PLEASE NOTE: The official deadline for copy for the August issue of the Review is *FRIDAY 10th July 2020.... LATEST DATE!!*

Please either send articles through email: **rowledgereview@yahoo.co.uk**

or leave your masterpieces in the pigeonhole provided in St James' Church.

We always welcome your contributions and would love to hear from anyone who think they could contribute a series of articles on a theme – any subject considered.

Please also continue to notify us of any required changes to the Directory listing.

ADVERTISING

Rowledge Review Advertising

Maggie Blyth handles our advertising sales.

If you want to promote your business through these pages, you can contact Maggie on:

01252 790660 maggie.v.blyth@gmail.com

Please send articles to
rowledgereview@yahoo.co.uk
not to anyone else's personal
email accounts.
Thanks

alpha decor
01252 724675

Complete decorating service
Interior and exterior painting Wallpaper hanging
In business locally for over 25 years

david horne

Clear All Pest Control



Fully qualified professional country services
Specialising in Hornets, Wasps & Moles

Phone Dean on: 07768 986 338 or
www.clearallpestcontrol.com



BARRINGTONS **SOLICITORS**

Residential Conveyancing
Wills & Probate
Powers of Attorney
Corporate / Commercial
Commercial Property
Employment & Settlement Agreements
Debt Recovery
Equity Release / Lifetime Mortgages

6 St George's Yard
Castle Street
Farnham
GU9 7LW
Tel: 01252 741751

www.barringtons-solicitors.co.uk
info@barringtons-solicitors.co.uk

THORNE LEGGETT

Independent family funeral directors

Geoffrey M. Thorne M.B.I.E Dip F.D L.M.B.I.F.D

Gill Thorne Dip F.D L.M.B.I.F.D

Michael Thorne Dip F.D. L.M.B.I.F.D

Robin Thorne Dip F.D. L.M.B.I.F.D.

Simon Goff Dip F.D

Here to support you in your time of need.

Immediate 24 hour assistance

8-10 The Street, Wrecclesham, Farnham, Surrey, GU10 4RP
Farnham 01252 715520

www.thorne-leggett.com



Nash Electrical Services

39 Boundstone Road, Farnham, Surrey GU10 4TW

Domestic and Commercial Contractors
Rewires, Extensions, Alterations
Inspection, Testing and Certification
Fault Finding and Repair
No Job Too Small



Fully 'Part P' Compliant
Established 1980



Phone: 01252 794178 www.nashelectrical.co.uk

ROWLEDGE GARAGE MOTOR ENGINEERS

Rowledge Garage supply and fit all makes of tyres.
We also carry out full wheel alignment and adjustments.

Phone : (01252) 792379

Mobile : 07442 490521

Martin Hoare

ROWLEDGE, FARNHAM, SURREY GU10 4AA
E MAIL: ROWLEDGEGARAGE@BTCONNECT.COM

